

# South Carolina Department of Probation, Parole & Pardon Services



Annual Statistical Report

Fiscal Year 2006



# TABLE OF CONTENTS

---

## SECTION A---TOTAL POPULATION

TABLE 1-A	Total Admissions by Status . . . . .	3
TABLE 2-A	Total Admissions by Type of Offense . . . . .	4
TABLE 3-A	Total Admissions by Gender & Race . . . . .	5
FIGURE 1	Total Admissions by Gender & Race . . . . .	6
TABLE 4-A	Active Offenders by Level of Supervision . . . . .	7
FIGURE 2	Active Offenders by Level of Supervision . . . . .	8
TABLE 5-A	Total Closures by Type . . . . .	9
TABLE 6-A	Rate per Thousand High Risk Male Population . . . . .	10
TABLE 7-A	Rate per Thousand High Risk Female Population . . . . .	11
TABLE 8-A	Offender Drug Testing . . . . .	12
TABLE 9-A	Total Admissions by Age . . . . .	13

## SECTION B---PROBATION

TABLE 1-B	Probation Admissions by Type of Offense . . . . .	15
TABLE 2-B	Probation Admissions by Gender & Race . . . . .	16
TABLE 3-B	Active Probation Offenders by Level of Supervision . . . . .	17
FIGURE 3	Active Probation Offenders by Level of Supervision . . . . .	18
TABLE 4-B	Probation Closures by Type . . . . .	19
TABLE 5-B	Probation Admissions by Age . . . . .	20

## SECTION C---PAROLE

TABLE 1-C	Parole Admissions by Type of Offense . . . . .	22
TABLE 2-C	Parole Admissions by Gender & Race . . . . .	23
TABLE 3-C	Active Parole Offenders by Level of Supervision . . . . .	24
FIGURE 4	Active Parole Offenders by Level of Supervision . . . . .	25
TABLE 4-C	Parole Closures by Type . . . . .	26
TABLE 5-C	Parole Admissions by Age . . . . .	27

## SECTION D---YOA

TABLE 1-D	YOA Admissions by Type of Offense . . . . .	29
TABLE 2-D	YOA Admissions by Gender & Race . . . . .	30
TABLE 3-D	Active YOA Offenders by Level of Supervision . . . . .	31
FIGURE 5	Active YOA Offenders by Level of Supervision . . . . .	32
TABLE 4-D	YOA Closures by Type . . . . .	33
TABLE 5-D	YOA Admissions by Age . . . . .	34

**SECTION E---VIOLATIONS**

TABLE 1-E	Violations by County . . . . .	36
TABLE 2-E	Closings by Type . . . . .	37

**SUMMARY**

CHART 1	Population Characteristics . . . . .	39
CHART 2	Admissions to SCDPPPS . . . . .	40
CHART 3	Violent Admission by Program . . . . .	41



## Message from the Director

---

The Fiscal Year 2005-06 Annual Statistical Report is attached for your review and reference. This report provides a basic statistical representation of the work of more than 739 agents and employees of this Department. While there have been many challenges over the course of the year, I am pleased to report that more than sixty-four out of every hundred offenders successfully completed supervision. The Bureau of Justice Statistics of the U.S. Department of Justice (2001) reported nationally that approximately 62% of 3.9 million offenders had successfully met the conditions of their supervision.

The South Carolina Department of Probation, Parole and Pardon Services operates its offender programs within a clear framework of public safety in supervising the 48,757 offenders who were under the legal jurisdiction of the Department in FY 06. The Department promotes public safety and offender compliance through ensuring that our interventions promote the offender's ability to make positive changes in his or her life. In addition, our interventions are responses focused to address present or potential problems that may interfere with the successful completion of supervision.

The following tables provide a description of the offender population and answer some of the more commonly asked questions regarding the Department's programmatic efforts. Each table is preceded by a short description of its contents.

For the reader who wishes additional information or clarification, please do not hesitate to contact Tony Dukes, Research Director of the Office of Executive Programs at 734-3503.

Sincerely,

A handwritten signature in black ink that reads "Samuel B. Glover". The signature is written in a cursive, flowing style.

Samuel B. Glover  
Director



## To the Reader

---

The reader should be aware, that there are different ways of reporting units of data depending upon the purpose. Admissions include only those offenders admitted to SCDPPPS who had no other active cases at the time of admission. Closures information reflects only the last order to close during the fiscal year. Actives represents only those offenders who were active on June 30, 2006.

At the end of FY 2005-06, there were 48,757 offenders who were under the legal jurisdiction of the Department. Legal jurisdiction includes offenders who have been transferred out of state, absconded with active warrants, and others who are not under the active day-to-day supervision of the Department. At the end of the fiscal year 32,436 offenders were under active supervision of the Department.

In addition, due to rounding, some of the totals will not equal 100%. Where possible, missing data or rounding has been indicated.

*Section A*  
*Total Population*



## Total Population

---

Tables 1-A through 9-A and Figures 1-2, represent admissions to the Department of Probation, Parole and Pardon Services (SCDPPPS) over FY 05-06. These tables count admissions to a particular sanction, and include only those offenders admitted to SCDPPPS who had no other active cases at the time of admission. These tables also include only the main case even though an offender may have been admitted with more than one case. In FY 05-06, there were a total of 19,073 admissions. A state and county total is provided for each category of admission. Within the racial categories, due to the small number of offenders classified as "Hispanic, Native American, or Other", they have been grouped together and classified as "Other".

Table 1-A provides information on total admissions by program status<sup>1</sup>. The counties of Charleston, Greenville, Richland and Spartanburg contributed the largest number of total admissions, together accounting for 33% of all admissions.

Table 2-A presents information on total admissions by type of offense, violent versus non-violent. Violent refers to those offenses as defined by the Omnibus Crime Act<sup>2</sup>. Total admissions during FY 05-06 were predominately non-violent with very few admissions (6%) for violent offenses.

Table 3-A and Figure 1 illustrates total admissions by gender and race. Admissions overall continue to be predominately male, 81%, with a racial composition of 53% black, 45% white, and 2% other.

Table 4-A and Figure 2 describe all active offenders by level of supervision on June 30, 2006. This total does not include new and unclassified offenders, or indirect supervision offenders, such as those incarcerated on split sentences. The level of supervision determines how often the offender is seen by the Agent. Among all offenders, high level

<sup>1</sup>Probation status includes Probation, Probation Terminates Upon Payment, Suspended During Probation, Split Probation, Monitor for the Court, and NGRI and Parole cases. Parole status includes Parole, Department of Juvenile Justice, Supervised Furlough IIA and early release program, and Community Supervision Program cases. YOA include Youth Offender Act Case.

<sup>2</sup>Murder, Armed Robbery, Attempted Armed Robbery, Kidnaping, Carjacking, Criminal Sexual Conduct 1st and 2nd degree, Criminal Sexual Conduct with a Minor, Assault with Intent to Commit Criminal Sexual Conduct 1<sup>st</sup> or 2<sup>nd</sup> degree, Engaging a Child for Sexual Performance, Assault and Battery with Intent to Kill, Voluntary Manslaughter, Drug Trafficking (44-53-370 e), Arson 1<sup>st</sup> and 2<sup>nd</sup> degree, Burglary 1<sup>st</sup> degree, Burglary 2<sup>nd</sup> degree with Aggravating Circumstances, or Accessory Before the Fact to any of the above crimes.

supervision represented 22%, standard supervision represented 70%, sex offender supervision represented 4%, followed by intensive supervision at 4%.

Table 5-A shows total closures by type (successful or unsuccessful). Closures include only those offenders in which all cases have completely closed out from SCDPPS. Only the last order to close during FY 05-06 and within that order only the main case, even though an offender may have had more than one case, is included. The overall success rate for all offenders closing during FY 05-06 was 64%. The unsuccessful rate, 36%, is defined as those offenders whose supervision was revoked due to a technical violation or new offense and those instances when the offender was sentenced to prison on a new offense.

Table 6-A presents the relationship between the number of high risk males (ages 17-34) in a county and the number of those males admitted to community supervision. This table illustrates that statewide, for every one thousand males age 17 to 34, 19.7 were admitted to the supervision of the Department of Probation, Parole and Pardon Services. County rates range from a low of 10.2 to a high of 33.4. This number is limited to new admissions for the fiscal year and does not reflect the percentage of active offenders in this age category.

Table 7-A demonstrates the relationship between the number of high risk females (ages 17-34) in a county and the number of those females admitted to community supervision. This table illustrates that statewide, for every one thousand females age 17 to 34, 4.2 were admitted to the supervision of the Department of Probation, Parole and Pardon Services. County rates range from a low of 0.4 to a high of 9.3. This number is limited to new admissions for the fiscal year and does not reflect the percentage of active offenders in this age category.

Table 8-A shows drug testing activity during FY 05-06. This table represents the number of individual offenders tested, the number of individuals testing positive, the number of times offenders were tested, and the total number of positive tests.

Table 9-A describes offender admissions by age category.



**S.C. DEPARTMENT OF  
PROBATION, PAROLE AND PARDON SERVICES  
TOTAL ADMISSIONS BY STATUS  
TABLE 1-A**

<b>COUNTY</b>	<b>PROB. ADM.</b>	<b>PERCENT PROB.</b>	<b>PAROLE ADM.</b>	<b>PERCENT PAROLE</b>	<b>YOA ADM.</b>	<b>PERCENT YOA</b>	<b>TOTAL ADM.</b>
ABBEVILLE	101	91%	6	5%	4	4%	111
AIKEN	501	83%	61	10%	44	7%	606
ALLENDALE	29	69%	6	14%	7	17%	42
ANDERSON	525	81%	84	13%	40	6%	649
BAMBERG	67	87%	6	8%	4	5%	77
BARNWELL	67	77%	9	10%	11	13%	87
BEAUFORT	319	89%	22	6%	17	5%	358
BERKELEY	485	83%	51	9%	46	8%	582
CALHOUN	40	73%	7	13%	8	15%	55
CHARLESTON	1,336	80%	115	7%	209	13%	1,660
CHEROKEE	277	85%	36	11%	14	4%	327
CHESTER	123	78%	17	11%	18	11%	158
CHESTERFIELD	103	71%	25	17%	18	12%	146
CLARENDON	123	83%	18	12%	8	5%	149
COLLETON	104	78%	14	10%	16	12%	134
DARLINGTON	140	71%	34	17%	22	11%	196
DILLON	128	81%	18	11%	13	8%	159
DORCHESTER	465	87%	25	5%	42	8%	532
EDGEFIELD	96	81%	14	12%	9	8%	119
FAIRFIELD	105	83%	12	9%	10	8%	127
FLORENCE	537	80%	84	13%	51	8%	672
GEORGETOWN	239	81%	30	10%	27	9%	296
GREENVILLE	1,510	86%	153	9%	84	5%	1,747
GREENWOOD	283	83%	31	9%	25	7%	339
HAMPTON	50	75%	8	12%	9	13%	67
HORRY	797	85%	96	10%	40	4%	933
JASPER	93	86%	7	6%	8	7%	108
KERSHAW	122	82%	20	13%	7	5%	149
LANCASTER	328	91%	4	1%	28	8%	360
LAURENS	342	86%	28	7%	29	7%	399
LEE	62	72%	15	17%	9	10%	86
LEXINGTON	886	89%	78	8%	34	3%	998
MCCORMICK	32	80%	5	13%	3	8%	40
MARION	134	74%	24	13%	22	12%	180
MARLBORO	134	74%	24	13%	24	13%	182
NEWBERRY	178	82%	22	10%	17	8%	217
OCONEE	250	87%	26	9%	12	4%	288
ORANGEBURG	320	77%	50	12%	48	11%	418
PICKENS	413	90%	27	6%	18	4%	458
RICHLAND	1,039	77%	194	14%	113	8%	1,346
SALUDA	61	79%	6	8%	10	13%	77
SPARTANBURG	1,254	87%	123	8%	71	5%	1,448
SUMTER	468	79%	80	14%	44	7%	592
UNION	182	87%	16	8%	12	6%	210
WILLIAMSBURG	148	85%	16	9%	10	6%	174
YORK	780	78%	130	13%	84	8%	994
TRANSITIONAL ADM.	14	67%	6	29%	1	5%	21
<b>STATE TOTAL</b>	<b>15,790</b>	<b>83%</b>	<b>1,883</b>	<b>10%</b>	<b>1,400</b>	<b>7%</b>	<b>19,073</b>

**S.C. DEPARTMENT OF  
PROBATION, PAROLE AND PARDON SERVICES  
TOTAL ADMISSIONS BY TYPE OF OFFENSE  
TABLE 2-A**

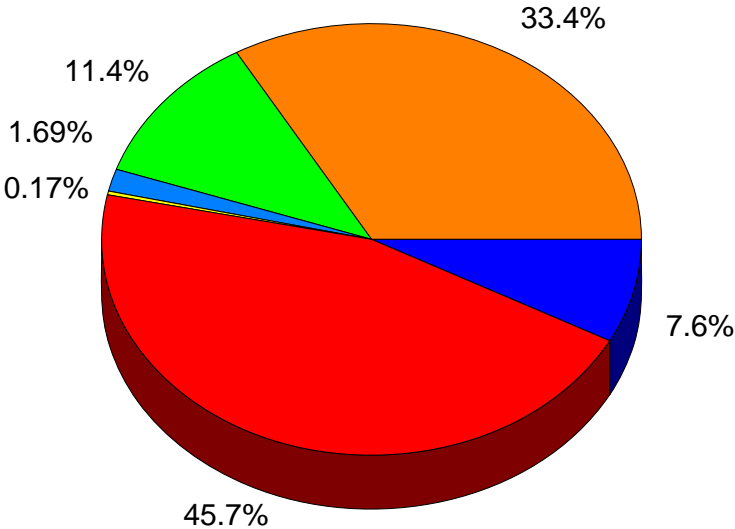
<b>COUNTY</b>	<b>OMNIBUS VIOLENT</b>	<b>PERCENT VIOLENT</b>	<b>NONVIOLENT</b>	<b>PERCENT NONVIOLENT</b>	<b>TOTAL ADM.</b>
ABBEVILLE	2	2%	109	98%	111
AIKEN	39	6%	567	94%	606
ALLENDALE	2	5%	40	95%	42
ANDERSON	58	9%	591	91%	649
BAMBERG	4	5%	73	95%	77
BARNWELL	6	7%	81	93%	87
BEAUFORT	10	3%	348	97%	358
BERKELEY	29	5%	553	95%	582
CALHOUN	3	5%	52	95%	55
CHARLESTON	96	6%	1,564	94%	1,660
CHEROKEE	24	7%	303	93%	327
CHESTER	9	6%	149	94%	158
CHESTERFIELD	19	13%	127	87%	146
CLARENDON	16	11%	133	89%	149
COLLETON	9	7%	125	93%	134
DARLINGTON	17	9%	179	91%	196
DILLON	14	9%	145	91%	159
DORCHESTER	24	5%	508	95%	532
EDGEFIELD	5	4%	114	96%	119
FAIRFIELD	5	4%	122	96%	127
FLORENCE	36	5%	636	95%	672
GEORGETOWN	17	6%	279	94%	296
GREENVILLE	110	6%	1,637	94%	1,747
GREENWOOD	23	7%	316	93%	339
HAMPTON	4	6%	63	94%	67
HORRY	61	7%	872	93%	933
JASPER	8	7%	100	93%	108
KERSHAW	11	7%	138	93%	149
LANCASTER	11	3%	349	97%	360
LAURENS	21	5%	378	95%	399
LEE	9	10%	77	90%	86
LEXINGTON	54	5%	944	95%	998
MCCORMICK	0	0%	40	100%	40
MARION	12	7%	168	93%	180
MARLBORO	11	6%	171	94%	182
NEWBERRY	18	8%	199	92%	217
OCONEE	14	5%	274	95%	288
ORANGEBURG	23	6%	395	94%	418
PICKENS	22	5%	436	95%	458
RICHLAND	126	9%	1,220	91%	1,346
SALUDA	2	3%	75	97%	77
SPARTANBURG	74	5%	1,374	95%	1,448
SUMTER	55	9%	537	91%	592
UNION	7	3%	203	97%	210
WILLIAMSBURG	7	4%	167	96%	174
YORK	47	5%	947	95%	994
TRANSITIONAL ADM.	1	5%	20	95%	21
<b>STATE TOTAL</b>	<b>1,175</b>	<b>6%</b>	<b>17,898</b>	<b>94%</b>	<b>19,073</b>

**S.C. DEPARTMENT OF  
PROBATION, PAROLE AND PARDON SERVICES  
TOTAL ADMISSIONS BY GENDER AND RACE  
TABLE 3-A  
N=19,073**

<b>COUNTY</b>	<b>PERCENT MALE</b>	<b>PERCENT FEMALE</b>	<b>PERCENT BLACK</b>	<b>PERCENT OTHER</b>	<b>PERCENT WHITE</b>
ABBEVILLE	83%	17%	54%	0%	46%
AIKEN	80%	20%	47%	2%	51%
ALLENDALE	93%	7%	93%	0%	7%
ANDERSON	78%	22%	33%	0%	67%
BAMBERG	94%	6%	82%	0%	18%
BARNWELL	84%	16%	68%	0%	32%
BEAUFORT	75%	25%	61%	6%	33%
BERKELEY	81%	19%	43%	3%	55%
CALHOUN	87%	13%	78%	2%	20%
CHARLESTON	86%	14%	69%	2%	30%
CHEROKEE	76%	24%	34%	1%	65%
CHESTER	87%	13%	61%	0%	39%
CHESTERFIELD	86%	14%	60%	0%	40%
CLARENDON	79%	21%	75%	1%	23%
COLLETON	89%	11%	63%	2%	35%
DARLINGTON	84%	16%	61%	2%	37%
DILLON	81%	19%	59%	5%	36%
DORCHESTER	80%	20%	46%	2%	52%
EDGEFIELD	80%	20%	60%	1%	39%
FAIRFIELD	87%	13%	68%	0%	32%
FLORENCE	84%	16%	69%	1%	30%
GEORGETOWN	84%	16%	63%	1%	36%
GREENVILLE	77%	23%	42%	3%	55%
GREENWOOD	82%	18%	60%	1%	39%
HAMPTON	94%	6%	81%	0%	19%
HORRY	80%	20%	36%	3%	61%
JASPER	80%	20%	65%	4%	31%
KERSHAW	79%	21%	53%	1%	46%
LANCASTER	79%	21%	49%	3%	49%
LAURENS	79%	21%	47%	2%	52%
LEE	83%	17%	83%	0%	17%
LEXINGTON	77%	23%	41%	2%	57%
MCCORMICK	88%	13%	90%	0%	10%
MARION	81%	19%	77%	2%	21%
MARLBORO	89%	11%	66%	6%	28%
NEWBERRY	81%	19%	69%	3%	28%
OCONEE	76%	24%	21%	2%	77%
ORANGEBURG	83%	17%	78%	1%	20%
PICKENS	76%	24%	12%	1%	87%
RICHLAND	82%	18%	78%	2%	21%
SALUDA	87%	13%	49%	3%	48%
SPARTANBURG	76%	24%	44%	1%	55%
SUMTER	85%	15%	75%	1%	24%
UNION	77%	23%	40%	0%	60%
WILLIAMSBURG	87%	13%	84%	1%	15%
YORK	81%	19%	43%	3%	54%
TRANSITIONAL ADM.	86%	14%	17%	0%	16%
<b>STATE TOTAL</b>	<b>81%</b>	<b>19%</b>	<b>53%</b>	<b>2%</b>	<b>45%</b>

# TOTAL ADMISSIONS BY RACE AND GENDER

## FIGURE 1



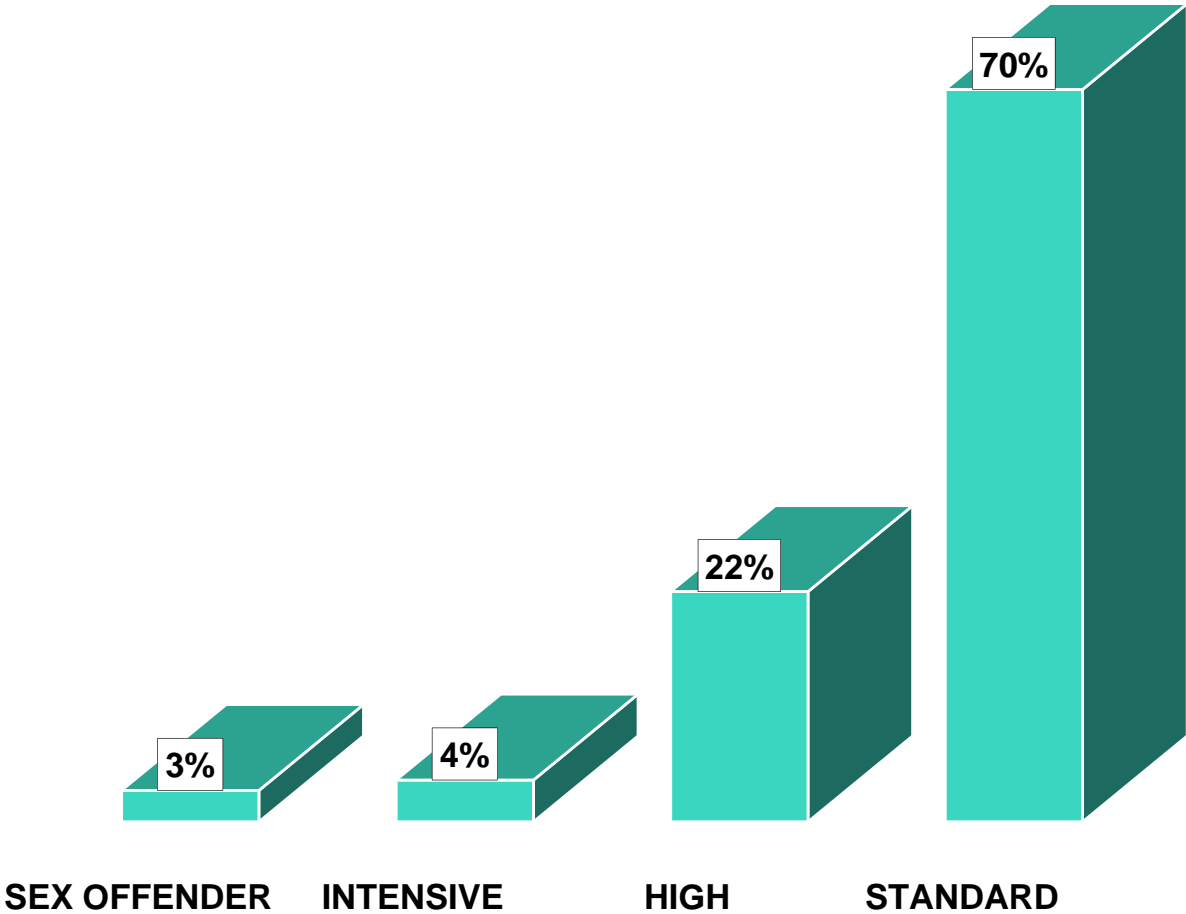
- White Males
- White Females
- Other Males
- Other Females
- Black Males
- Black Females

**S.C. DEPARTMENT OF  
PROBATION, PAROLE AND PARDON SERVICES  
ACTIVE OFFENDERS BY LEVEL OF  
SUPERVISION, JUNE 30, 2006  
TABLE 4-A**

<b>COUNTY</b>	<b>STANDARD</b>	<b>HIGH</b>	<b>INTENSIVE</b>	<b>SEX OFFENDER</b>	<b>TOTAL</b>
ABBEVILLE	71%	21%	3%	4%	220
AIKEN	71%	22%	3%	4%	1,073
ALLENDALE	78%	17%	0%	5%	76
ANDERSON	67%	24%	5%	4%	1,474
BAMBERG	78%	15%	2%	5%	130
BARNWELL	66%	22%	5%	7%	146
BEAUFORT	70%	24%	2%	3%	493
BERKELEY	70%	23%	2%	4%	1,096
CALHOUN	66%	19%	11%	4%	93
CHARLESTON	59%	33%	4%	4%	2,534
CHEROKEE	62%	30%	4%	3%	529
CHESTER	62%	26%	8%	5%	195
CHESTERFIELD	56%	35%	4%	4%	179
CLARENDON	76%	17%	4%	2%	224
COLLETON	70%	22%	3%	5%	242
DARLINGTON	73%	22%	5%	1%	310
DILLON	79%	13%	4%	3%	188
DORCHESTER	75%	19%	3%	4%	794
EDGEFIELD	74%	20%	1%	5%	216
FAIRFIELD	66%	28%	4%	1%	179
FLORENCE	71%	22%	4%	2%	1,056
GEORGETOWN	81%	14%	2%	3%	400
GREENVILLE	69%	25%	3%	2%	3,547
GREENWOOD	68%	26%	3%	3%	551
HAMPTON	75%	16%	6%	3%	134
HORRY	76%	18%	3%	3%	1,414
JASPER	81%	13%	2%	4%	224
KERSHAW	61%	26%	8%	4%	282
LANCASTER	66%	28%	4%	2%	571
LAURENS	77%	18%	3%	2%	762
LEE	47%	41%	9%	3%	137
LEXINGTON	73%	19%	4%	3%	1,506
MCCORMICK	69%	24%	2%	5%	55
MARION	71%	19%	8%	2%	228
MARLBORO	65%	25%	8%	2%	229
NEWBERRY	69%	27%	3%	1%	378
OCONEE	67%	27%	2%	4%	540
ORANGEBURG	82%	12%	3%	3%	763
PICKENS	73%	22%	2%	4%	756
RICHLAND	79%	14%	4%	3%	2,723
SALUDA	63%	28%	6%	3%	158
SPARTANBURG	64%	30%	3%	3%	2,136
SUMTER	77%	17%	5%	2%	924
UNION	73%	19%	4%	4%	356
WILLIAMSBURG	64%	29%	2%	4%	282
YORK	78%	15%	4%	3%	1,631
RESTITUTION CENTERS	38%	0%	61%	0%	302
<b>STATE TOTAL</b>	<b>70%</b>	<b>22%</b>	<b>4%</b>	<b>3%</b>	<b>32,436</b>
<b>ACTIVE OFFENDERS</b>	<b>22,859</b>	<b>7,211</b>	<b>1,367</b>	<b>999</b>	<b>32,436</b>

# ACTIVE OFFENDERS BY LEVEL OF SUPERVISION

## FIGURE 2



**S.C. DEPARTMENT OF  
PROBATION, PAROLE AND PARDON SERVICES  
TOTAL CLOSURES BY TYPE  
TABLE 5-A**

<b>COUNTY</b>	<b>SUCCESSFUL</b>	<b>SUCCESSFUL RATE</b>	<b>UNSUCCESSFUL</b>	<b>UNSUCCESSFUL RATE</b>
ABBEVILLE	76	63%	45	37%
AIKEN	351	73%	133	27%
ALLENDALE	25	46%	29	54%
ANDERSON	389	65%	211	35%
BAMBERG	70	89%	9	11%
BARNWELL	50	61%	32	39%
BEAUFORT	193	63%	112	37%
BERKELEY	313	68%	145	32%
CALHOUN	23	43%	31	57%
CHARLESTON	919	64%	528	36%
CHEROKEE	238	75%	78	25%
CHESTER	74	64%	41	36%
CHESTERFIELD	92	53%	82	47%
CLARENDON	107	71%	43	29%
COLLETON	80	65%	43	35%
DARLINGTON	145	50%	146	50%
DILLON	110	61%	69	39%
DORCHESTER	232	72%	90	28%
EDGEFIELD	66	69%	29	31%
FAIRFIELD	79	78%	22	22%
FLORENCE	398	62%	239	38%
GEORGETOWN	227	67%	110	33%
GREENVILLE	1053	63%	628	37%
GREENWOOD	202	55%	167	45%
HAMPTON	45	65%	24	35%
HORRY	635	67%	310	33%
JASPER	68	65%	36	35%
KERSHAW	117	64%	67	36%
LANCASTER	167	72%	64	28%
LAURENS	226	62%	137	38%
LEE	60	63%	36	38%
LEXINGTON	487	71%	198	29%
MCCORMICK	32	64%	18	36%
MARION	101	56%	80	44%
MARLBORO	105	56%	82	44%
NEWBERRY	121	72%	47	28%
OCONEE	177	66%	92	34%
ORANGEBURG	291	75%	98	25%
PICKENS	240	69%	106	31%
RICHLAND	849	55%	690	45%
SALUDA	54	70%	23	30%
SPARTANBURG	793	59%	558	41%
SUMTER	376	66%	198	34%
UNION	123	65%	65	35%
WILLIAMSBURG	93	58%	68	42%
YORK	531	69%	244	31%
TRANSITIONAL ADM.	198	100%	0	0%
<b>STATE TOTAL</b>	<b>11,401</b>	<b>64%</b>	<b>6,303</b>	<b>36%</b>

**S.C. DEPARTMENT OF  
PROBATION, PAROLE AND PARDON SERVICES  
RATE PER 1,000 HIGH RISK  
MALE (ADMISSIONS) POPULATION  
TABLE 6-A**

<b>COUNTY</b>	<b>MALE POPULATION AGE 17-34*</b>	<b>SCDPPPS MALES AGE 17-34</b>	<b>RATE PER 1,000 AGE 17-34 OFFENDERS</b>	<b>RANK ORDER RATE PER 1,000 OFFENDERS</b>
ABBEVILLE	2,915	43	14.8	4
AIKEN	15,928	326	20.5	22
ALLENDALE	1,603	33	20.6	23
ANDERSON	18,993	294	15.5	7
BAMBERG	2,087	50	24.0	32
BARNWELL	2,602	53	20.4	21
BEAUFORT	18,413	188	10.2	1
BERKELEY	21,888	315	14.4	3
CALHOUN	1,488	32	21.5	26
CHARLESTON	43,941	1000	22.8	28
CHEROKEE	6,483	171	26.4	38
CHESTER	3,832	100	26.1	34
CHESTERFIELD	5,029	89	17.7	15
CLARENDON	4,189	76	18.1	16
COLLETON	4,050	75	18.5	18
DARLINGTON	7,570	127	16.8	11
DILLON	3,488	93	26.7	40
DORCHESTER	11,113	294	26.5	39
EDGEFIELD	3,843	58	15.1	5
FAIRFIELD	2,565	73	28.5	43
FLORENCE	14,939	392	26.2	35
GEORGETOWN	5,644	161	28.5	44
GREENVILLE	49,263	783	15.9	9
GREENWOOD	8,089	180	22.3	27
HAMPTON	2,901	47	16.2	10
HORRY	24,916	461	18.5	17
JASPER	3,179	61	19.2	19
KERSHAW	5,560	87	15.6	8
LANCASTER	7,921	183	23.1	30
LAURENS	8,449	222	26.3	37
LEE	2,758	48	17.4	14
LEXINGTON	25,618	505	19.7	20
MCCORMICK	1,404	24	17.1	12
MARION	4,035	110	27.3	42
MARLBORO	3,769	126	33.4	46
NEWBERRY	4,378	115	26.3	36
OCONEE	7,401	128	17.3	13
ORANGEBURG	10,724	252	23.5	31
PICKENS	18,560	243	13.1	2
RICHLAND	49,109	752	15.3	6
SALUDA	2,385	50	21.0	25
SPARTANBURG	31,437	649	20.6	24
SUMTER	13,540	345	25.5	33
UNION	3,254	104	32.0	45
WILLIAMSBURG	3,986	92	23.1	29
YORK	19,844	538	27.1	41
<b>STATE TOTAL</b>	<b>515,083</b>	<b>10,148</b>	<b>19.7</b>	

\*DATA FURNISHED BY S.C. STATE DATA CENTER



**S.C. DEPARTMENT OF  
PROBATION, PAROLE AND PARDON SERVICES  
RATE PER 1,000 HIGH RISK  
FEMALE (ADMISSIONS) POPULATION  
TABLE 7-A**

<b>COUNTY</b>	<b>FEMALE POPULATION AGE 17-34*</b>	<b>SCDPPPS FEMALES AGE 17-34</b>	<b>RATE PER 1,000 AGE 17-34 OFFENDERS</b>	<b>RANK ORDER RATE PER 1,000 OFFENDERS</b>
ABBEVILLE	3,176	12	3.8	20
AIKEN	17,023	79	4.6	32
ALLENDALE	1,184	2	1.7	4
ANDERSON	19,519	77	3.9	23
BAMBERG	2,270	2	0.9	2
BARNWELL	2,747	8	2.9	12
BEAUFORT	13,976	65	4.7	33
BERKELEY	18,012	64	3.6	16
CALHOUN	1,666	4	2.4	7
CHARLESTON	43,604	134	3.1	13
CHEROKEE	6,665	51	7.7	45
CHESTER	4,079	13	3.2	14
CHESTERFIELD	5,096	14	2.7	9
CLARENDON	3,393	20	5.9	41
COLLETON	4,309	6	1.4	3
DARLINGTON	8,302	22	2.6	8
DILLON	3,802	19	5.0	35
DORCHESTER	11,378	70	6.2	42
EDGEFIELD	2,582	11	4.3	28
FAIRFIELD	2,749	10	3.6	18
FLORENCE	16,331	61	3.7	19
GEORGETOWN	5,966	23	3.9	22
GREENVILLE	49,074	216	4.4	30
GREENWOOD	8,937	32	3.6	17
HAMPTON	2,305	1	0.4	1
HORRY	23,882	110	4.6	31
JASPER	2,337	10	4.3	29
KERSHAW	5,815	22	3.8	21
LANCASTER	7,138	44	6.2	43
LAURENS	8,401	52	6.2	44
LEE	2,245	9	4.0	25
LEXINGTON	26,429	132	5.0	34
MCCORMICK	840	2	2.4	6
MARION	4,490	23	5.1	36
MARLBORO	3,375	14	4.1	26
NEWBERRY	4,353	24	5.5	38
OCONEE	7,204	42	5.8	40
ORANGEBURG	12,373	49	4.0	24
PICKENS	16,862	59	3.5	15
RICHLAND	49,742	143	2.9	11
SALUDA	2,174	4	1.8	5
SPARTANBURG	31,676	181	5.7	39
SUMTER	13,402	56	4.2	27
UNION	3,424	32	9.3	46
WILLIAMSBURG	4,368	12	2.7	10
YORK	21,679	113	5.2	37
<b>STATE TOTAL</b>	<b>510,354</b>	<b>2,149</b>	<b>4.2</b>	

\*DATA FURNISHED BY S.C. STATE DATA CENTER

**S.C. DEPARTMENT OF  
PROBATION, PAROLE AND PARDON SERVICES  
OFFENDER DRUG TESTING  
TABLE 8-A**

<b>COUNTY</b>	<b>INDIVIDUAL OFFENDERS TESTED</b>	<b>INDIVIDUALS TESTING POSITIVE</b>	<b>PERCENTAGE OF INDIVIDUAL OFFENDERS TESTING POSITIVE</b>	<b>TOTAL NO. POSITIVE TESTS</b>	<b>NUMBER OF TIMES OFFENDERS WERE TESTED</b>
ABBEVILLE	15	3	20.00%	5	16
AIKEN	532	129	24.25%	185	826
ALLENDALE	63	37	58.73%	46	79
ANDERSON	994	380	38.23%	686	1670
BAMBERG	141	24	17.02%	33	218
BARNWELL	168	58	34.52%	91	345
BEAUFORT*	403	149	36.97%	247	731
BERKELEY*	478	193	40.38%	317	641
CALHOUN	76	43	56.58%	83	166
CHARLESTON	1191	632	53.06%	1358	1986
CHEROKEE	271	113	41.70%	183	360
CHESTER	165	55	33.33%	75	253
CHESTERFIELD	123	52	42.28%	112	296
CLARENDON	195	49	25.13%	80	278
COLLETON	159	72	45.28%	146	330
DARLINGTON	470	134	28.51%	218	783
DILLON	36	22	61.11%	35	42
DORCHESTER*	305	144	47.21%	227	422
EDGEFIELD	149	46	30.87%	63	185
FAIRFIELD	166	64	38.55%	92	197
FLORENCE*	499	236	47.29%	364	730
GEORGETOWN	202	84	41.58%	138	265
GREENVILLE*	1654	644	38.94%	1124	2957
GREENWOOD	216	103	47.69%	160	269
HAMPTON	53	21	39.62%	30	66
HORRY	858	264	30.77%	460	1230
JASPER	105	22	20.95%	26	160
KERSHAW	220	109	49.55%	207	442
LANCASTER	200	96	48.00%	166	276
LAURENS	409	200	48.90%	403	642
LEE	31	13	41.94%	26	49
LEXINGTON	469	180	38.38%	271	618
MCCORMICK	15	5	33.33%	8	16
MARION	89	52	58.43%	97	151
MARLBORO	133	61	45.86%	89	189
NEWBERRY	106	52	49.06%	80	207
OCONEE	85	52	61.18%	96	114
ORANGEBURG	582	195	33.51%	274	716
PICKENS	70	24	34.29%	40	74
RICHLAND	2037	812	39.86%	1280	3106
SALUDA	161	38	23.60%	50	251
SPARTANBURG	1885	750	39.79%	1341	2944
SUMTER	287	193	67.25%	317	403
UNION	78	30	38.46%	54	98
WILLIAMSBURG	244	135	55.33%	323	542
YORK*	795	325	40.88%	526	1115
SPARTANBURG REST. CTR.	174	63	36.21%	95	306
CHARLESTON REST. CTR	214	93	43.46%	144	351
COLUMBIA REST. CTR	381	171	44.88%	285	693
<b>STATE TOTAL</b>	<b>18,352</b>	<b>7,422</b>	<b>40.44%</b>	<b>12,756</b>	<b>28,804</b>

\* Includes Satellite Office

**S.C. DEPARTMENT OF  
PROBATION, PAROLE AND PARDON SERVICES  
TOTAL ADMISSIONS BY AGE**

**TABLE 9-A**

**N = 19,073**

<b>COUNTY</b>	<b>Age 24 &amp; Under</b>	<b>Percent 24 &amp; Under</b>	<b>Age 25 &amp; Over</b>	<b>Percent 25 &amp; Over</b>
ABBEVILLE	37	33%	74	67%
AIKEN	210	35%	396	65%
ALLENDALE	17	40%	25	60%
ANDERSON	152	23%	497	77%
BAMBERG	30	39%	47	61%
BARNWELL	29	33%	58	67%
BEAUFORT	132	37%	226	63%
BERKELEY	206	35%	376	65%
CALHOUN	17	31%	38	69%
CHARLESTON	649	39%	1,011	61%
CHEROKEE	112	34%	215	66%
CHESTER	57	36%	101	64%
CHESTERFIELD	48	33%	98	67%
CLARENDON	55	37%	94	63%
COLLETON	47	35%	87	65%
DARLINGTON	72	37%	124	63%
DILLON	60	38%	99	62%
DORCHESTER	202	38%	330	62%
EDGEFIELD	41	34%	78	66%
FAIRFIELD	42	33%	85	67%
FLORENCE	220	33%	452	67%
GEORGETOWN	100	34%	196	66%
GREENVILLE	445	25%	1,302	75%
GREENWOOD	100	29%	239	71%
HAMPTON	30	45%	37	55%
HORRY	288	31%	645	69%
JASPER	34	31%	74	69%
KERSHAW	54	36%	95	64%
LANCASTER	127	35%	233	65%
LAURENS	141	35%	258	65%
LEE	29	34%	57	66%
LEXINGTON	310	31%	688	69%
MCCORMICK	18	45%	22	55%
MARION	79	44%	101	56%
MARLBORO	82	45%	100	55%
NEWBERRY	69	32%	148	68%
OCONEE	71	25%	217	75%
ORANGEBURG	172	41%	246	59%
PICKENS	148	32%	310	68%
RICHLAND	492	37%	854	63%
SALUDA	34	44%	43	56%
SPARTANBURG	384	27%	1,064	73%
SUMTER	217	37%	375	63%
UNION	69	33%	141	67%
WILLIAMSBURG	52	30%	122	70%
YORK	366	37%	628	63%
TRANSITIONAL ADM.	5	24%	16	76%
			0	
<b>STATE TOTAL</b>	<b>6,351</b>	<b>33%</b>	<b>12,722</b>	<b>67%</b>

*Section B*  
*Probation*



## Probation

---

**PROBATION:** The Department is charged with the responsibility of supervising those offenders placed on probation by the Court. Probation is a court-ordered community sanction which suspends the imposition of all or part of the original sentence of incarceration. It requires the offender, under SCDPPPS supervision in the community, to adhere to a set of conditions which limit the offender's freedom, reparation to victims if so ordered, and to provide for judicial revocation for violation of those conditions.

Tables 1-B and 2-B represent all probation admissions during FY 05-06. Probation includes regular probation, intensive probation and offenders admitted to probation supervision from a split sentence from prison.

Table 1-B breaks down probation admissions in terms of offense type, violent versus non-violent. For FY 05-06 statewide 3% of all probation admissions were for violent offenses.

Table 2-B provides information on probation admissions by gender and race. Probation admissions were predominately male, 78%, with a racial composition of 50% black, 2% other, and 48% white.

Table 3-B and Figure 3 describe the active probation offender population in terms of level of supervision on June 30, 2006. This table does not include new and unclassified offenders or indirect supervision offenders, such as those incarcerated on split sentences. Among probationers, high level supervision represented 23%, standard supervision represented 72%, sex offender supervision 3%, followed by intensive supervision at 2%.

Table 4-B provides data for probation closures by type (successful or unsuccessful). The overall success rate for probationers (64%) was the same as the success rate for the total offender population (64%).

Table 5-B reflects probation admissions by age category.

**S.C DEPARTMENT OF  
PROBATION, PAROLE AND PARDON SERVICES  
PROBATION ADMISSIONS BY TYPE OF OFFENSE  
TABLE 1-B**

<b>COUNTY</b>	<b>OMNIBUS VIOLENT</b>	<b>PERCENT VIOLENT</b>	<b>NONVIOLENT</b>	<b>PERCENT NONVIOLENT</b>	<b>TOTAL</b>
ABBEVILLE	1	1%	100	99%	101
AIKEN	22	4%	479	96%	501
ALLENDALE	0	0%	29	100%	29
ANDERSON	28	5%	497	95%	525
BAMBERG	1	1%	66	99%	67
BARNWELL	2	3%	65	97%	67
BEAUFORT	4	1%	315	99%	319
BERKELEY	13	3%	472	97%	485
CALHOUN	1	3%	39	98%	40
CHARLESTON	40	3%	1,296	97%	1,336
CHEROKEE	12	4%	265	96%	277
CHESTER	3	2%	120	98%	123
CHESTERFIELD	6	6%	97	94%	103
CLARENDON	7	6%	116	94%	123
COLLETON	1	1%	103	99%	104
DARLINGTON	3	2%	137	98%	140
DILLON	8	6%	120	94%	128
DORCHESTER	11	2%	454	98%	465
EDGEFIELD	4	4%	92	96%	96
FAIRFIELD	3	3%	102	97%	105
FLORENCE	14	3%	523	97%	537
GEORGETOWN	8	3%	231	97%	239
GREENVILLE	61	4%	1,449	96%	1,510
GREENWOOD	8	3%	275	97%	283
HAMPTON	0	0%	50	100%	50
HORRY	30	4%	767	96%	797
JASPER	4	4%	89	96%	93
KERSHAW	2	2%	120	98%	122
LANCASTER	10	3%	318	97%	328
LAURENS	11	3%	331	97%	342
LEE	3	5%	59	95%	62
LEXINGTON	27	3%	859	97%	886
MCCORMICK	0	0%	32	100%	32
MARION	5	4%	129	96%	134
MARLBORO	7	5%	127	95%	134
NEWBERRY	7	4%	171	96%	178
OCONEE	10	4%	240	96%	250
ORANGEBURG	10	3%	310	97%	320
PICKENS	15	4%	398	96%	413
RICHLAND	47	5%	992	95%	1,039
SALUDA	0	0%	61	100%	61
SPARTANBURG	35	3%	1,219	97%	1,254
SUMTER	18	4%	450	96%	468
UNION	2	1%	180	99%	182
WILLIAMSBURG	3	2%	145	98%	148
YORK	16	2%	764	98%	780
TRANSITIONAL ADM.	1	7%	13	93%	14
<b>STATE TOTAL</b>	<b>524</b>	<b>3%</b>	<b>15,266</b>	<b>97%</b>	<b>15,790</b>

**S.C. DEPARTMENT OF  
PROBATION, PAROLE AND PARDON SERVICES  
PROBATION ADMISSIONS BY GENDER AND RACE**

**TABLE 2-B  
N= 15,790**

<b>COUNTY</b>	<b>PERCENT MALE</b>	<b>PERCENT FEMALE</b>	<b>PERCENT BLACK</b>	<b>PERCENT OTHER</b>	<b>PERCENT WHITE</b>
ABBEVILLE	82%	18%	54%	0%	46%
AIKEN	77%	23%	44%	2%	54%
ALLENDALE	90%	10%	90%	0%	10%
ANDERSON	76%	24%	30%	0%	70%
BAMBERG	93%	7%	81%	0%	19%
BARNWELL	84%	16%	63%	0%	37%
BEAUFORT	73%	27%	60%	7%	33%
BERKELEY	80%	20%	40%	3%	57%
CALHOUN	83%	18%	78%	3%	20%
CHARLESTON	84%	16%	64%	2%	35%
CHEROKEE	77%	23%	32%	1%	66%
CHESTER	84%	16%	59%	0%	41%
CHESTERFIELD	81%	19%	59%	0%	41%
CLARENDON	75%	25%	74%	2%	24%
COLLETON	88%	13%	61%	3%	37%
DARLINGTON	81%	19%	57%	2%	41%
DILLON	76%	24%	57%	5%	38%
DORCHESTER	78%	22%	43%	2%	54%
EDGEFIELD	78%	22%	58%	1%	41%
FAIRFIELD	86%	14%	66%	0%	34%
FLORENCE	80%	20%	66%	1%	34%
GEORGETOWN	82%	18%	59%	1%	41%
GREENVILLE	75%	25%	40%	3%	57%
GREENWOOD	80%	20%	58%	1%	41%
HAMPTON	92%	8%	74%	0%	26%
HORRY	78%	22%	33%	3%	64%
JASPER	76%	24%	60%	4%	35%
KERSHAW	76%	24%	51%	1%	48%
LANCASTER	78%	22%	48%	3%	49%
LAURENS	78%	22%	47%	1%	52%
LEE	76%	24%	82%	0%	18%
LEXINGTON	76%	24%	40%	2%	58%
MCCORMICK	84%	16%	88%	0%	13%
MARION	78%	22%	75%	2%	23%
MARLBORO	86%	14%	64%	4%	31%
NEWBERRY	79%	21%	67%	3%	30%
OCONEE	74%	26%	18%	2%	80%
ORANGEBURG	79%	21%	77%	2%	22%
PICKENS	76%	24%	11%	1%	88%
RICHLAND	81%	19%	76%	2%	22%
SALUDA	85%	15%	43%	3%	54%
SPARTANBURG	75%	25%	42%	2%	56%
SUMTER	83%	17%	74%	1%	25%
UNION	74%	26%	39%	0%	61%
WILLIAMSBURG	86%	14%	82%	1%	17%
YORK	78%	22%	39%	3%	57%
TRANSITIONAL ADM.	93%	7%	43%	0%	57%
<b>STATE TOTAL</b>	<b>78%</b>	<b>22%</b>	<b>50%</b>	<b>2%</b>	<b>48%</b>

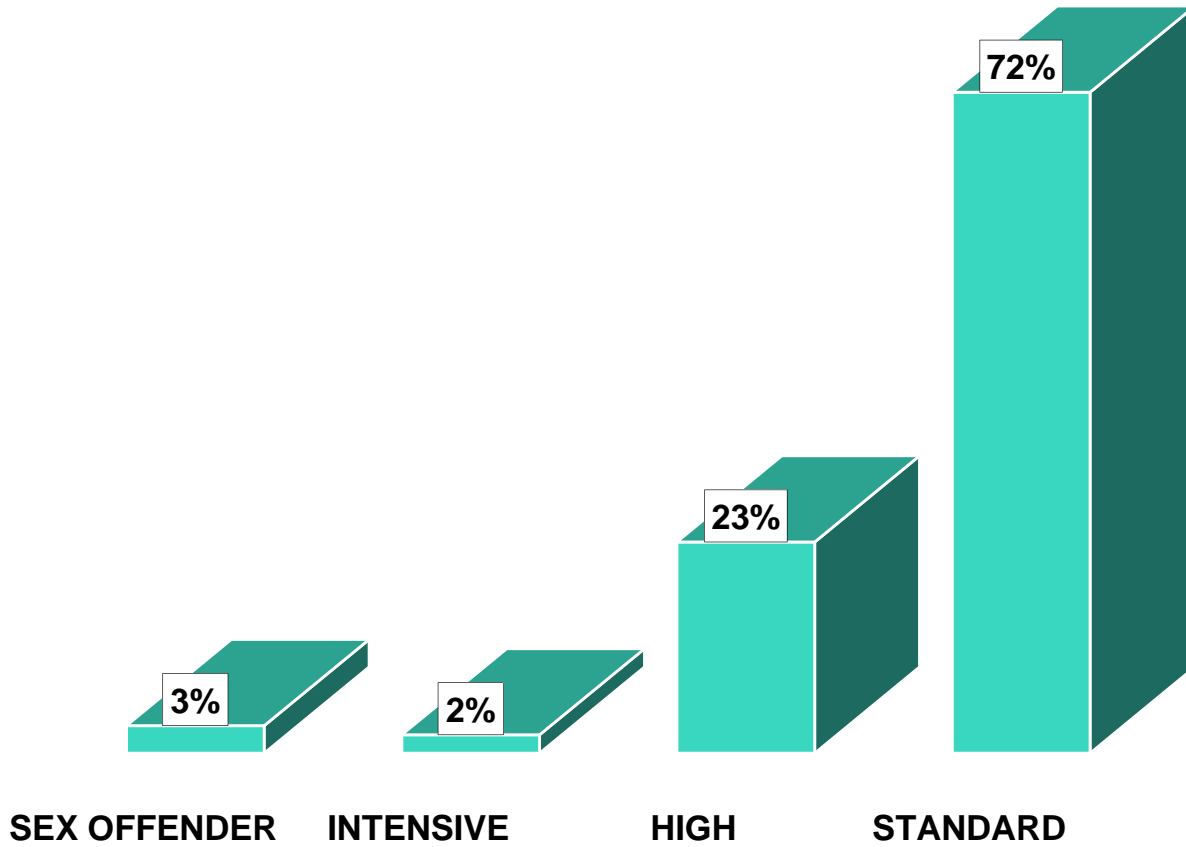
**S.C. DEPARTMENT OF  
PROBATION, PAROLE AND PARDON SERVICES  
ACTIVE PROBATION OFFENDERS BY LEVEL  
OF SUPERVISION, JUNE 30, 2006  
TABLE 3-B**

<b>COUNTY</b>	<b>STANDARD</b>	<b>HIGH</b>	<b>INTENSIVE</b>	<b>SEX OFFENDER</b>	<b>TOTAL</b>
ABBEVILLE	70%	24%	1%	5%	186
AIKEN	73%	22%	1%	4%	864
ALLENDALE	79%	16%	0%	4%	67
ANDERSON	69%	25%	2%	3%	1,223
BAMBERG	81%	14%	2%	4%	111
BARNWELL	69%	23%	1%	7%	101
BEAUFORT	72%	24%	1%	3%	426
BERKELEY	72%	24%	0%	4%	913
CALHOUN	69%	24%	5%	1%	75
CHARLESTON	61%	35%	1%	3%	2,027
CHEROKEE	62%	32%	3%	3%	444
CHESTER	68%	28%	0%	4%	160
CHESTERFIELD	62%	34%	0%	4%	135
CLARENDON	80%	17%	2%	1%	174
COLLETON	72%	23%	1%	3%	188
DARLINGTON	77%	22%	0%	1%	225
DILLON	78%	16%	2%	4%	138
DORCHESTER	76%	20%	1%	3%	663
EDGEFIELD	75%	20%	1%	5%	182
FAIRFIELD	67%	30%	2%	1%	146
FLORENCE	74%	24%	0%	2%	813
GEORGETOWN	83%	14%	0%	3%	319
GREENVILLE	70%	26%	2%	2%	3,016
GREENWOOD	71%	26%	0%	2%	445
HAMPTON	78%	17%	1%	4%	111
HORRY	79%	18%	0%	3%	1,200
JASPER	79%	16%	1%	5%	176
KERSHAW	61%	31%	4%	4%	224
LANCASTER	68%	28%	1%	2%	501
LAURENS	78%	19%	1%	2%	635
LEE	49%	47%	2%	2%	102
LEXINGTON	75%	20%	2%	3%	1,309
MCCORMICK	70%	24%	0%	6%	50
MARION	76%	18%	2%	3%	164
MARLBORO	71%	27%	1%	2%	158
NEWBERRY	70%	28%	1%	1%	303
OCONEE	67%	29%	0%	4%	450
ORANGEBURG	83%	13%	1%	3%	557
PICKENS	74%	22%	1%	3%	663
RICHLAND	82%	15%	1%	2%	2,133
SALUDA	67%	27%	2%	4%	124
SPARTANBURG	64%	33%	1%	3%	1,856
SUMTER	79%	18%	1%	2%	721
UNION	75%	20%	1%	4%	306
WILLIAMSBURG	64%	32%	1%	3%	216
YORK	80%	16%	1%	3%	1,311
RESTITUTION CENTERS	39%	0%	61%	0%	278
					0
<b>STATE TOTAL</b>	<b>72%</b>	<b>23%</b>	<b>2%</b>	<b>3%</b>	<b>26,589</b>
<b>ACTIVE PROBATIONERS</b>	<b>19,157</b>	<b>6,225</b>	<b>489</b>	<b>718</b>	<b>26,589</b>



# ACTIVE PROBATION OFFENDERS BY LEVEL OF SUPERVISION

## FIGURE 3



**S.C. DEPARTMENT OF  
PROBATION, PAROLE AND PARDON SERVICES  
PROBATION CLOSURES BY TYPE  
TABLE 4-B**

<b>COUNTY</b>	<b>SUCCESSFUL</b>	<b>SUCCESSFUL RATE</b>	<b>UNSUCCESSFUL</b>	<b>UNSUCCESSFUL RATE</b>
ABBEVILLE	64	61%	41	39%
AIKEN	306	72%	119	28%
ALLENDALE	21	48%	23	52%
ANDERSON	303	62%	183	38%
BAMBERG	64	90%	7	10%
BARNWELL	41	62%	25	38%
BEAUFORT	160	63%	95	37%
BERKELEY	271	69%	121	31%
CALHOUN	21	50%	21	50%
CHARLESTON	786	67%	387	33%
CHEROKEE	206	76%	66	24%
CHESTER	55	63%	32	37%
CHESTERFIELD	68	53%	61	47%
CLARENDON	87	73%	33	28%
COLLETON	67	67%	33	33%
DARLINGTON	116	50%	118	50%
DILLON	88	59%	60	41%
DORCHESTER	190	73%	72	27%
EDGEFIELD	57	72%	22	28%
FAIRFIELD	71	79%	19	21%
FLORENCE	330	66%	172	34%
GEORGETOWN	203	68%	96	32%
GREENVILLE	885	61%	556	39%
GREENWOOD	154	52%	144	48%
HAMPTON	36	63%	21	37%
HORRY	555	67%	279	33%
JASPER	53	60%	35	40%
KERSHAW	98	64%	56	36%
LANCASTER	153	74%	55	26%
LAURENS	177	60%	118	40%
LEE	51	62%	31	38%
LEXINGTON	431	70%	181	30%
MCCORMICK	25	61%	16	39%
MARION	73	58%	53	42%
MARLBORO	86	57%	65	43%
NEWBERRY	106	76%	34	24%
OCONEE	143	63%	85	37%
ORANGEBURG	232	77%	70	23%
PICKENS	206	70%	88	30%
RICHLAND	704	55%	587	45%
SALUDA	48	75%	16	25%
SPARTANBURG	704	60%	475	40%
SUMTER	312	63%	180	37%
UNION	100	64%	56	36%
WILLIAMSBURG	68	56%	54	44%
YORK	423	69%	190	31%
TRANSITIONAL ADM.	141	100%	0	0%
<b>STATE TOTAL</b>	<b>9,539</b>	<b>64%</b>	<b>5,251</b>	<b>36%</b>

**S.C. DEPARTMENT OF  
PROBATION, PAROLE AND PARDON SERVICES  
PROBATION ADMISSIONS BY AGE\*  
TABLE 5-B**

<b>COUNTY</b>	<b>Age 24 &amp; Under</b>	<b>Percent 24 &amp; Under</b>	<b>Age 25 &amp; Over</b>	<b>Percent 25 &amp; Over</b>
ABBEVILLE	32	32%	69	68%
AIKEN	154	31%	347	69%
ALLENDALE	12	41%	17	59%
ANDERSON	116	22%	409	78%
BAMBERG	27	40%	40	60%
BARNWELL	18	27%	49	73%
BEAUFORT	109	34%	210	66%
BERKELEY	158	33%	327	67%
CALHOUN	8	20%	32	80%
CHARLESTON	454	34%	882	66%
CHEROKEE	94	34%	183	66%
CHESTER	37	30%	86	70%
CHESTERFIELD	31	30%	72	70%
CLARENDON	45	37%	78	63%
COLLETON	32	31%	72	69%
DARLINGTON	45	32%	95	68%
DILLON	46	36%	82	64%
DORCHESTER	157	34%	308	66%
EDGEFIELD	29	30%	67	70%
FAIRFIELD	31	30%	74	70%
FLORENCE	163	30%	374	70%
GEORGETOWN	70	29%	169	71%
GREENVILLE	352	23%	1158	77%
GREENWOOD	77	27%	206	73%
HAMPTON	19	38%	31	62%
HORRY	234	29%	563	71%
JASPER	27	29%	66	71%
KERSHAW	40	33%	82	67%
LANCASTER	104	32%	224	68%
LAURENS	113	33%	229	67%
LEE	20	32%	42	68%
LEXINGTON	269	30%	617	70%
MCCORMICK	13	41%	19	59%
MARION	54	40%	80	60%
MARLBORO	56	42%	78	58%
NEWBERRY	48	27%	130	73%
OCONEE	57	23%	193	77%
ORANGEBURG	131	41%	189	59%
PICKENS	131	32%	282	68%
RICHLAND	348	33%	691	67%
SALUDA	24	39%	37	61%
SPARTANBURG	310	25%	944	75%
SUMTER	161	34%	307	66%
UNION	55	30%	127	70%
WILLIAMSBURG	39	26%	109	74%
YORK	272	35%	508	65%
TRANSITIONAL ADM.	2	14%	12	86%
<b>STATE TOTAL</b>	<b>4,824</b>	<b>31%</b>	<b>10,966</b>	<b>69%</b>

*Section C*  
*Parole*



## Parole

---

PAROLE: The Department is charged with the responsibility of supervising those offenders paroled by the SC Board of Paroles and Pardons. Parole is the conditional release of an individual from imprisonment, but not from the legal custody of the state, to complete his/her sentence outside a correctional institution under conditions and provisions of supervision determined by the Board. Should an individual be granted parole, he/she must agree to abide by certain conditions of community supervision. The violation of any of these conditions is sufficient grounds for revocation of parole by the Board, and the imposition of the remainder of the original sentence of incarceration.

Tables 1-C and 2-C pertain to data on all parole case admissions for FY 05-06. Parole includes regular parole, intensive parole and provisional parole. Eight two (82) early release offenders were also included in parole for FY 05-06.

Table 1-C shows parole admissions by type of offense. A larger percent of parole admissions, 33%, fall into the violent category, as compared to 3% for probation admissions and 3% for YOA admissions.

Table 2-C describes all parole admissions by gender and race. Parole admissions consisted primarily of males, 89%, with a racial composition of 66% black, 1% other, and 33% white.

Table 3-C and Figure 4 describe active parolees by level of supervision on June 30, 2006. This figure does not include new and unclassified offenders. Among parolees, standard supervision offenders represented 67% of the parolee population, followed by high level at 15%. Intensive supervision accounted for 12% of the parolee population and sex offender supervision was 6%.

Table 4-C presents parole case closures by type (successful or unsuccessful). The overall success rate for parolees (81%) was higher than that of probationers (64%).

Table 5-C describes the parole population by age category.

**S.C. DEPARTMENT OF  
PROBATION, PAROLE AND PARDON SERVICES  
PAROLE ADMISSIONS BY TYPE OF OFFENSE  
TABLE 1-C**

<b>COUNTY</b>	<b>OMNIBUS VIOLENT</b>	<b>PERCENT VIOLENT</b>	<b>NONVIOLENT</b>	<b>PERCENT NONVIOLENT</b>	<b>TOTAL</b>
ABBEVILLE	1	17%	5	83%	6
AIKEN	17	28%	44	72%	61
ALLENDALE	2	33%	4	67%	6
ANDERSON	29	35%	55	65%	84
BAMBERG	2	33%	4	67%	6
BARNWELL	4	44%	5	56%	9
BEAUFORT	6	27%	16	73%	22
BERKELEY	15	29%	36	71%	51
CALHOUN	2	29%	5	71%	7
CHARLESTON	52	45%	63	55%	115
CHEROKEE	11	31%	25	69%	36
CHESTER	6	35%	11	65%	17
CHESTERFIELD	11	44%	14	56%	25
CLARENDON	7	39%	11	61%	18
COLLETON	8	57%	6	43%	14
DARLINGTON	13	38%	21	62%	34
DILLON	6	33%	12	67%	18
DORCHESTER	12	48%	13	52%	25
EDGEFIELD	1	7%	13	93%	14
FAIRFIELD	2	17%	10	83%	12
FLORENCE	22	26%	62	74%	84
GEORGETOWN	8	27%	22	73%	30
GREENVILLE	43	28%	110	72%	153
GREENWOOD	15	48%	16	52%	31
HAMPTON	4	50%	4	50%	8
HORRY	30	31%	66	69%	96
JASPER	3	43%	4	57%	7
KERSHAW	8	40%	12	60%	20
LANCASTER	1	25%	3	75%	4
LAURENS	10	36%	18	64%	28
LEE	6	40%	9	60%	15
LEXINGTON	27	35%	51	65%	78
MCCORMICK	0	0%	5	100%	5
MARION	7	29%	17	71%	24
MARLBORO	4	17%	20	83%	24
NEWBERRY	11	50%	11	50%	22
OCONEE	4	15%	22	85%	26
ORANGEBURG	13	26%	37	74%	50
PICKENS	6	22%	21	78%	27
RICHLAND	74	38%	120	62%	194
SALUDA	2	33%	4	67%	6
SPARTANBURG	39	32%	84	68%	123
SUMTER	30	38%	50	63%	80
UNION	5	31%	11	69%	16
WILLIAMSBURG	4	25%	12	75%	16
YORK	29	22%	101	78%	130
TRANSITIONAL ADM.	0	0%	6	100%	6
<b>STATE TOTAL</b>	<b>612</b>	<b>33%</b>	<b>1271</b>	<b>67%</b>	<b>1,883</b>

**S.C. DEPARTMENT OF  
PROBATION, PAROLE AND PARDON SERVICES  
PAROLE ADMISSIONS BY GENDER AND RACE  
TABLE 2-C  
N=1,883**

<b>COUNTY</b>	<b>PERCENT MALE</b>	<b>PERCENT FEMALE</b>	<b>PERCENT BLACK</b>	<b>PERCENT OTHER</b>	<b>PERCENT WHITE</b>
ABBEVILLE	83%	17%	50%	0%	50%
AIKEN	95%	5%	70%	3%	26%
ALLENDALE	100%	0%	100%	0%	0%
ANDERSON	85%	15%	49%	1%	50%
BAMBERG	100%	0%	83%	0%	17%
BARNWELL	89%	11%	89%	0%	11%
BEAUFORT	95%	5%	68%	5%	27%
BERKELEY	90%	10%	53%	0%	47%
CALHOUN	100%	0%	57%	0%	43%
CHARLESTON	96%	4%	86%	1%	13%
CHEROKEE	67%	33%	39%	0%	61%
CHESTER	100%	0%	71%	0%	29%
CHESTERFIELD	96%	4%	64%	0%	36%
CLARENDON	100%	0%	83%	0%	17%
COLLETON	86%	14%	79%	0%	21%
DARLINGTON	85%	15%	76%	3%	21%
DILLON	100%	0%	72%	0%	28%
DORCHESTER	92%	8%	68%	0%	32%
EDGEFIELD	86%	14%	57%	0%	43%
FAIRFIELD	92%	8%	83%	0%	17%
FLORENCE	95%	5%	82%	1%	17%
GEORGETOWN	90%	10%	70%	0%	30%
GREENVILLE	88%	12%	56%	3%	41%
GREENWOOD	90%	10%	61%	3%	35%
HAMPTON	100%	0%	100%	0%	0%
HORRY	95%	5%	56%	1%	43%
JASPER	100%	0%	100%	0%	0%
KERSHAW	90%	10%	65%	0%	35%
LANCASTER	75%	25%	50%	0%	50%
LAURENS	79%	21%	46%	4%	50%
LEE	100%	0%	80%	0%	20%
LEXINGTON	90%	10%	54%	1%	45%
MCCORMICK	100%	0%	100%	0%	0%
MARION	100%	0%	83%	4%	13%
MARLBORO	96%	4%	71%	13%	17%
NEWBERRY	86%	14%	77%	5%	18%
OCONEE	85%	15%	42%	0%	58%
ORANGEBURG	92%	8%	78%	0%	22%
PICKENS	74%	26%	11%	0%	89%
RICHLAND	81%	19%	83%	1%	16%
SALUDA	83%	17%	83%	0%	17%
SPARTANBURG	82%	18%	49%	1%	50%
SUMTER	89%	11%	74%	0%	26%
UNION	100%	0%	44%	0%	56%
WILLIAMSBURG	94%	6%	94%	0%	6%
YORK	91%	9%	58%	2%	41%
TRANSITIONAL ADM.	67%	33%	67%	0%	33%
<b>STATE TOTAL</b>	<b>89%</b>	<b>11%</b>	<b>66%</b>	<b>1%</b>	<b>33%</b>

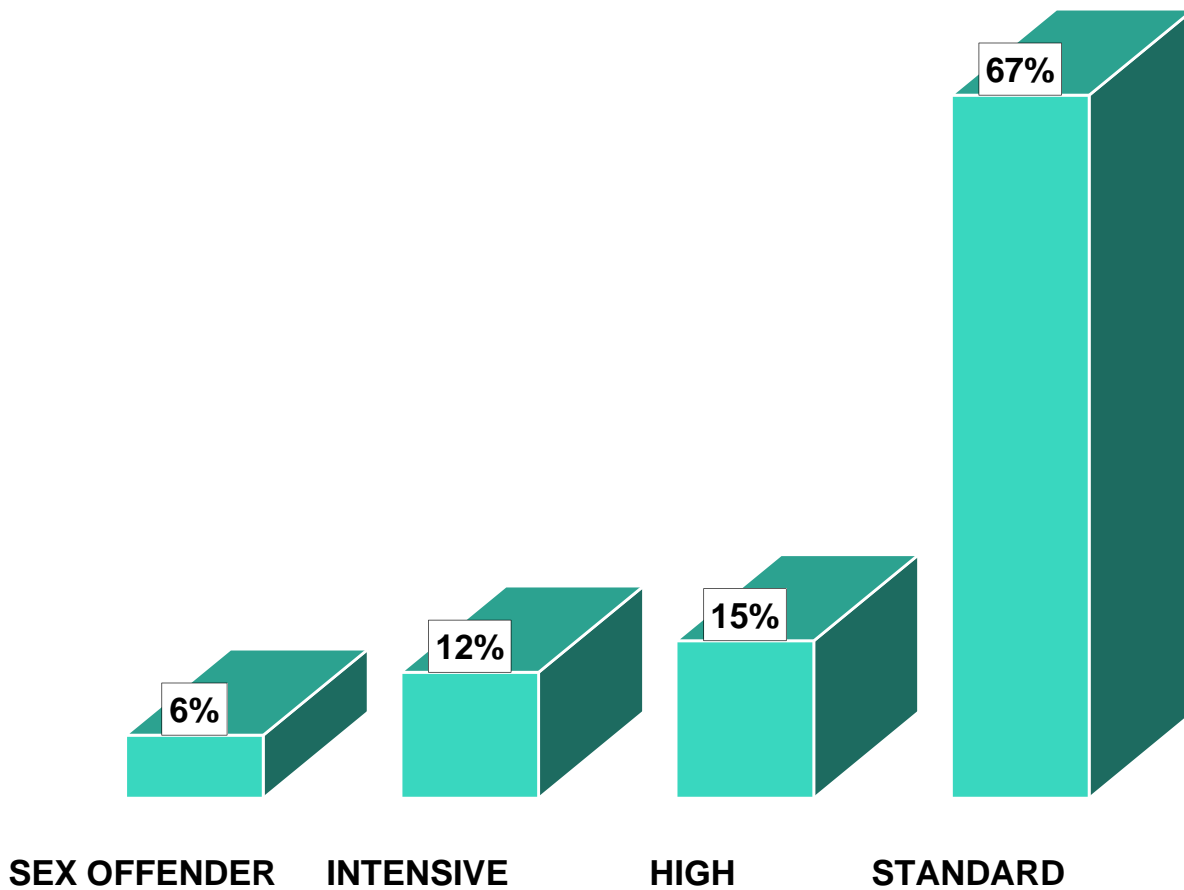
**S.C. DEPARTMENT OF  
PROBATION, PAROLE AND PARDON SERVICES  
ACTIVE PAROLE OFFENDERS BY LEVEL  
OF SUPERVISION, JUNE 30, 2006  
TABLE 3-C**

<b>COUNTY</b>	<b>STANDARD</b>	<b>HIGH</b>	<b>INTENSIVE</b>	<b>SEX OFFENDER</b>	<b>TOTAL</b>
ABBEVILLE	81%	7%	11%	0%	27
AIKEN	74%	17%	5%	4%	136
ALLENDALE	80%	20%	0%	0%	5
ANDERSON	61%	16%	15%	8%	190
BAMBERG	50%	20%	10%	20%	10
BARNWELL	56%	12%	20%	12%	25
BEAUFORT	67%	21%	4%	8%	48
BERKELEY	61%	22%	6%	11%	87
CALHOUN	78%	0%	0%	22%	9
CHARLESTON	60%	18%	10%	12%	234
CHEROKEE	64%	26%	6%	4%	53
CHESTER	45%	14%	32%	9%	22
CHESTERFIELD	35%	35%	17%	13%	23
CLARENDON	69%	11%	11%	8%	36
COLLETON	69%	17%	7%	7%	29
DARLINGTON	71%	15%	12%	2%	59
DILLON	89%	6%	3%	3%	35
DORCHESTER	68%	11%	8%	13%	63
EDGEFIELD	73%	18%	5%	5%	22
FAIRFIELD	65%	17%	13%	4%	23
FLORENCE	69%	17%	10%	5%	169
GEORGETOWN	68%	14%	10%	8%	50
GREENVILLE	68%	16%	11%	5%	383
GREENWOOD	54%	26%	11%	9%	65
HAMPTON	60%	13%	27%	0%	15
HORRY	64%	17%	14%	5%	151
JASPER	86%	5%	5%	5%	22
KERSHAW	65%	4%	26%	4%	46
LANCASTER	64%	22%	8%	6%	36
LAURENS	75%	13%	6%	5%	77
LEE	54%	12%	31%	4%	26
LEXINGTON	69%	13%	14%	5%	154
MCCORMICK	67%	0%	33%	0%	3
MARION	60%	24%	16%	0%	45
MARLBORO	52%	18%	25%	5%	44
NEWBERRY	73%	15%	8%	4%	48
OCONEE	68%	15%	12%	5%	60
ORANGEBURG	80%	8%	5%	7%	108
PICKENS	63%	19%	11%	6%	63
RICHLAND	73%	9%	12%	7%	382
SALUDA	45%	35%	20%	0%	20
SPARTANBURG	71%	13%	13%	3%	223
SUMTER	69%	11%	14%	6%	141
UNION	59%	21%	15%	6%	34
WILLIAMSBURG	60%	21%	8%	10%	48
YORK	69%	12%	13%	6%	202
RESTITUTION CENTERS	75%	13%	13%	0%	8
<b>STATE TOTAL</b>	67%	15%	12%	6%	3,759
<b>ACTIVE PAROLEES</b>	<b>2,528</b>	<b>564</b>	<b>434</b>	<b>233</b>	<b>3,759</b>



# ACTIVE PAROLE OFFENDERS BY LEVEL OF SUPERVISION

## FIGURE 4



**S.C. DEPARTMENT OF  
PROBATION, PAROLE AND PARDON SERVICES  
PAROLE CLOSURES BY TYPE  
TABLE 4-C**

COUNTY	SUCCESSFUL	SUCCESSFUL RATE	UNSUCCESSFUL	UNSUCCESSFUL RATE
ABBEVILLE	9	90%	1	10%
AIKEN	28	100%	0	0%
ALLENDALE	4	100%	0	0%
ANDERSON	73	91%	7	9%
BAMBERG	6	86%	1	14%
BARNWELL	4	67%	2	33%
BEAUFORT	20	83%	4	17%
BERKELEY	18	75%	6	25%
CALHOUN	1	33%	2	67%
CHARLESTON	75	80%	19	20%
CHEROKEE	22	96%	1	4%
CHESTER	12	92%	1	8%
CHESTERFIELD	16	67%	8	33%
CLARENDON	12	67%	6	33%
COLLETON	9	75%	3	25%
DARLINGTON	20	59%	14	41%
DILLON	9	90%	1	10%
DORCHESTER	23	96%	1	4%
EDGEFIELD	7	64%	4	36%
FAIRFIELD	4	80%	1	20%
FLORENCE	50	64%	28	36%
GEORGETOWN	17	74%	6	26%
GREENVILLE	133	81%	31	19%
GREENWOOD	28	82%	6	18%
HAMPTON	5	100%	0	0%
HORRY	60	87%	9	13%
JASPER	9	100%	0	0%
KERSHAW	15	88%	2	12%
LANCASTER	6	86%	1	14%
LAURENS	39	89%	5	11%
LEE	9	75%	3	25%
LEXINGTON	42	98%	1	2%
MCCORMICK	6	100%	0	0%
MARION	14	52%	13	48%
MARLBORO	12	63%	7	37%
NEWBERRY	12	86%	2	14%
OCONEE	25	93%	2	7%
ORANGEBURG	41	87%	6	13%
PICKENS	28	82%	6	18%
RICHLAND	110	73%	41	27%
SALUDA	4	80%	1	20%
SPARTANBURG	66	76%	21	24%
SUMTER	40	93%	3	7%
UNION	15	100%	0	0%
WILLIAMSBURG	18	72%	7	28%
YORK	66	76%	21	24%
TRANSITIONAL ADMIN.	48	100%	0	0%
<b>STATE TOTAL</b>	<b>1290</b>	<b>81%</b>	<b>304</b>	<b>19%</b>

**S.C. DEPARTMENT OF  
PROBATION, PAROLE AND PARDON SERVICES  
PAROLE ADMISSIONS BY AGE  
TABLE 5-C**

<b>COUNTY</b>	<b>Age 24 &amp; Under</b>	<b>Percent 24 &amp; Under</b>	<b>Age 25 &amp; Over</b>	<b>Percent 25 &amp; Over</b>
ABBEVILLE	1	17%	5	83%
AIKEN	15	25%	46	75%
ALLENDALE	2	33%	4	67%
ANDERSON	8	10%	76	90%
BAMBERG	0	0%	6	100%
BARNWELL	1	11%	8	89%
BEAUFORT	7	32%	15	68%
BERKELEY	11	22%	40	78%
CALHOUN	1	14%	6	86%
CHARLESTON	19	17%	96	83%
CHEROKEE	7	19%	29	81%
CHESTER	6	35%	11	65%
CHESTERFIELD	2	8%	23	92%
CLARENDON	2	11%	16	89%
COLLETON	2	14%	12	86%
DARLINGTON	7	21%	27	79%
DILLON	3	17%	15	83%
DORCHESTER	6	24%	19	76%
EDGEFIELD	4	29%	10	71%
FAIRFIELD	3	25%	9	75%
FLORENCE	9	11%	75	89%
GEORGETOWN	6	20%	24	80%
GREENVILLE	20	13%	133	87%
GREENWOOD	3	10%	28	90%
HAMPTON	2	25%	6	75%
HORRY	19	20%	77	80%
JASPER	0	0%	7	100%
KERSHAW	7	35%	13	65%
LANCASTER	1	25%	3	75%
LAURENS	7	25%	21	75%
LEE	1	7%	14	93%
LEXINGTON	11	14%	67	86%
MCCORMICK	2	40%	3	60%
MARION	4	17%	20	83%
MARLBORO	3	13%	21	88%
NEWBERRY	4	18%	18	82%
OCONEE	3	12%	23	88%
ORANGEBURG	4	8%	46	92%
PICKENS	3	11%	24	89%
RICHLAND	43	22%	151	78%
SALUDA	2	33%	4	67%
SPARTANBURG	11	9%	112	91%
SUMTER	16	20%	64	80%
UNION	4	25%	12	75%
WILLIAMSBURG	3	19%	13	81%
YORK	16	12%	114	88%
TRANSITIONAL ADM.	2	33%	4	67%
<b>STATE TOTAL</b>	<b>313</b>	<b>17%</b>	<b>1570</b>	<b>83%</b>

*Section D*  
*Youthful Offender*



## Youthful Offender Conditional Release

---

**YOUTHFUL OFFENDER CONDITIONAL RELEASE:** Inmates ages 17 through 24, sentenced under the state's Youthful Offender Act (YOA) to an indeterminate period of incarceration (not to exceed six years) within the S.C. Department of Corrections (SCDC), may be conditionally released prior to that time, based on offense, category, adjustment and evaluation while incarcerated. While under SCDPPPS supervision, these offenders remain under the jurisdiction of SCDC.

Tables 1-D and 2-D present data on all YOA case admissions for FY 05-06.

Table 1-D displays YOA admissions by type of offense. YOA violent admissions at 3% are the same for those admitted to probation at 3%.

Table 2-D illustrates YOA admissions by gender and race. YOA admissions were predominately male (96%) and black (71%).

Table 3-D and Figure 5 describe the active population for YOA conditional release in terms of level of supervision on June 30, 2006. Twenty percent (20%) are supervised at a high level. Intensive level supervision accounted for 21%, while 56% are supervised at standard level and 2% at the sex offender level.

Table 4-D shows YOA offenders are more inclined to close unsuccessfully (57%) than parolees (19%).

Table 5-D describes YOA admissions by age category.

**S.C. DEPARTMENT OF  
PROBATION, PAROLE AND PARDON SERVICES  
YOA ADMISSIONS BY TYPE OF OFFENSE  
TABLE 1-D**

<b>COUNTY</b>	<b>OMNIBUS VIOLENT</b>	<b>PERCENT VIOLENT</b>	<b>NONVIOLENT</b>	<b>PERCENT NONVIOLENT</b>	<b>TOTAL</b>
ABBEVILLE	0	0%	4	100%	4
AIKEN	0	0%	44	100%	44
ALLENDALE	0	0%	7	100%	7
ANDERSON	1	3%	39	98%	40
BAMBERG	1	25%	3	75%	4
BARNWELL	0	0%	11	100%	11
BEAUFORT	0	0%	17	100%	17
BERKELEY	1	2%	45	98%	46
CALHOUN	0	0%	8	100%	8
CHARLESTON	4	2%	205	98%	209
CHEROKEE	1	7%	13	93%	14
CHESTER	0	0%	18	100%	18
CHESTERFIELD	2	11%	16	89%	18
CLARENDON	2	25%	6	75%	8
COLLETON	0	0%	16	100%	16
DARLINGTON	1	5%	21	95%	22
DILLON	0	0%	13	100%	13
DORCHESTER	1	2%	41	98%	42
EDGEFIELD	0	0%	9	100%	9
FAIRFIELD	0	0%	10	100%	10
FLORENCE	0	0%	51	100%	51
GEORGETOWN	1	4%	26	96%	27
GREENVILLE	6	7%	78	93%	84
GREENWOOD	0	0%	25	100%	25
HAMPTON	0	0%	9	100%	9
HORRY	1	3%	39	98%	40
JASPER	1	13%	7	88%	8
KERSHAW	1	14%	6	86%	7
LANCASTER	0	0%	28	100%	28
LAURENS	0	0%	29	100%	29
LEE	0	0%	9	100%	9
LEXINGTON	0	0%	34	100%	34
MCCORMICK	0	0%	3	100%	3
MARION	0	0%	22	100%	22
MARLBORO	0	0%	24	100%	24
NEWBERRY	0	0%	17	100%	17
OCONEE	0	0%	12	100%	12
ORANGEBURG	0	0%	48	100%	48
PICKENS	1	6%	17	94%	18
RICHLAND	5	4%	108	96%	113
SALUDA	0	0%	10	100%	10
SPARTANBURG	0	0%	71	100%	71
SUMTER	7	16%	37	84%	44
UNION	0	0%	12	100%	12
WILLIAMSBURG	0	0%	10	100%	10
YORK	2	2%	82	98%	84
TRANSITIONAL ADM.	0	0%	1	100%	1
<b>STATE TOTAL</b>	<b>39</b>	<b>3%</b>	<b>1,361</b>	<b>97%</b>	<b>1,400</b>

**S.C. DEPARTMENT OF  
PROBATION, PAROLE AND PARDON SERVICES  
YOA ADMISSIONS BY GENDER AND RACE  
TABLE 2-D  
N=1,400**

<b>COUNTY</b>	<b>PERCENT MALE</b>	<b>PERCENT FEMALE</b>	<b>PERCENT BLACK</b>	<b>PERCENT OTHER</b>	<b>PERCENT WHITE</b>
ABBEVILLE	100%	0%	50%	0%	50%
AIKEN	98%	2%	50%	0%	50%
ALLENDALE	100%	0%	100%	0%	0%
ANDERSON	90%	10%	43%	0%	58%
BAMBERG	100%	0%	100%	0%	0%
BARNWELL	82%	18%	82%	0%	18%
BEAUFORT	94%	6%	65%	0%	35%
BERKELEY	91%	9%	57%	0%	43%
CALHOUN	100%	0%	100%	0%	0%
CHARLESTON	98%	2%	91%	0%	9%
CHEROKEE	93%	7%	57%	0%	43%
CHESTER	94%	6%	61%	0%	39%
CHESTERFIELD	100%	0%	56%	0%	44%
CLARENDON	100%	0%	75%	0%	25%
COLLETON	100%	0%	63%	0%	38%
DARLINGTON	100%	0%	64%	0%	36%
DILLON	100%	0%	62%	8%	31%
DORCHESTER	95%	5%	64%	0%	36%
EDGEFIELD	89%	11%	78%	0%	22%
FAIRFIELD	100%	0%	70%	0%	30%
FLORENCE	100%	0%	82%	0%	18%
GEORGETOWN	96%	4%	93%	0%	7%
GREENVILLE	96%	4%	58%	2%	39%
GREENWOOD	100%	0%	80%	0%	20%
HAMPTON	100%	0%	100%	0%	0%
HORRY	98%	3%	55%	0%	45%
JASPER	100%	0%	88%	0%	13%
KERSHAW	100%	0%	57%	0%	43%
LANCASTER	93%	7%	57%	0%	43%
LAURENS	97%	3%	48%	3%	48%
LEE	100%	0%	89%	0%	11%
LEXINGTON	94%	6%	50%	0%	50%
MCCORMICK	100%	0%	100%	0%	0%
MARION	82%	18%	86%	0%	14%
MARLBORO	100%	0%	71%	8%	21%
NEWBERRY	94%	6%	82%	0%	18%
OCONEE	100%	0%	33%	0%	67%
ORANGEBURG	96%	4%	90%	0%	10%
PICKENS	100%	0%	33%	0%	67%
RICHLAND	92%	8%	82%	0%	18%
SALUDA	100%	0%	70%	0%	30%
SPARTANBURG	100%	0%	61%	1%	38%
SUMTER	95%	5%	84%	0%	16%
UNION	92%	8%	42%	0%	58%
WILLIAMSBURG	100%	0%	100%	0%	0%
YORK	96%	4%	60%	1%	39%
TRANSITIONAL ADM.	100%	0%	100%	0%	0%
<b>STATE TOTAL</b>	<b>96%</b>	<b>4%</b>	<b>71%</b>	<b>1%</b>	<b>29%</b>

Percent may not equal 100 due to rounding.

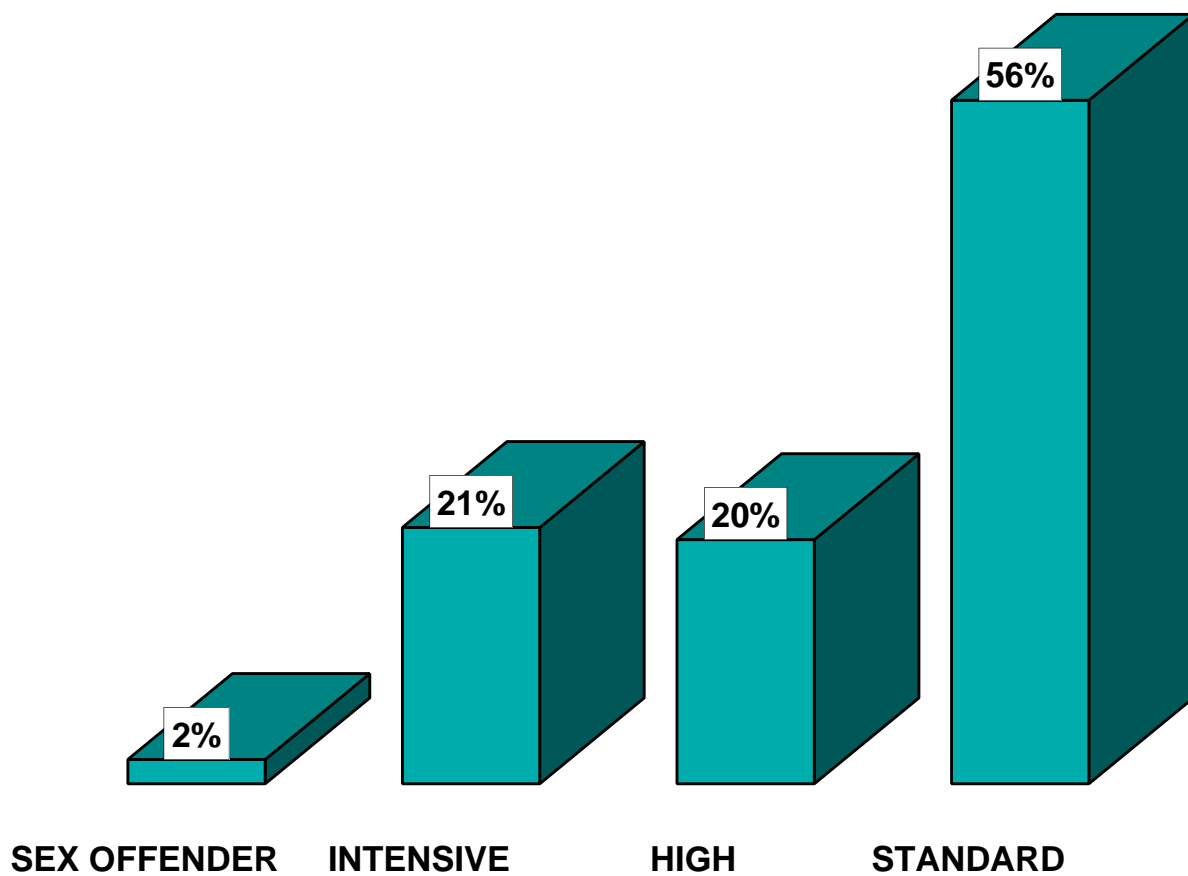
**S.C. DEPARTMENT OF  
PROBATION, PAROLE AND PARDON SERVICES  
ACTIVE YOA OFFENDERS BY LEVEL  
OF SUPERVISION, JUNE 30, 2006  
TABLE 3-D**

<b>COUNTY</b>	<b>STANDARD</b>	<b>HIGH</b>	<b>INTENSIVE</b>	<b>SEX OFFENDER</b>	<b>TOTAL</b>
ABBEVILLE	71%	0%	29%	0%	7
AIKEN	49%	30%	21%	0%	73
ALLENDALE	50%	25%	0%	25%	4
ANDERSON	52%	18%	23%	7%	61
BAMBERG	78%	22%	0%	0%	9
BARNWELL	65%	30%	5%	0%	20
BEAUFORT	37%	42%	21%	0%	19
BERKELEY	61%	17%	17%	5%	96
CALHOUN	22%	0%	67%	11%	9
CHARLESTON	48%	30%	21%	2%	273
CHEROKEE	50%	19%	19%	13%	32
CHESTER	15%	23%	62%	0%	13
CHESTERFIELD	38%	43%	19%	0%	21
CLARENDON	50%	36%	14%	0%	14
COLLETON	56%	20%	12%	12%	25
DARLINGTON	42%	31%	27%	0%	26
DILLON	67%	7%	27%	0%	15
DORCHESTER	68%	15%	15%	3%	68
EDGEFIELD	67%	25%	8%	0%	12
FAIRFIELD	50%	30%	20%	0%	10
FLORENCE	51%	16%	30%	3%	74
GEORGETOWN	71%	19%	10%	0%	31
GREENVILLE	55%	29%	16%	1%	148
GREENWOOD	59%	24%	15%	2%	41
HAMPTON	63%	0%	38%	0%	8
HORRY	44%	24%	29%	3%	63
JASPER	92%	0%	8%	0%	26
KERSHAW	58%	17%	25%	0%	12
LANCASTER	38%	26%	35%	0%	34
LAURENS	60%	14%	20%	6%	50
LEE	11%	56%	22%	11%	9
LEXINGTON	49%	12%	37%	2%	43
MCCORMICK	50%	50%	0%	0%	2
MARION	53%	11%	37%	0%	19
MARLBORO	48%	26%	26%	0%	27
NEWBERRY	56%	30%	11%	4%	27
OCONEE	57%	23%	13%	7%	30
ORANGEBURG	81%	8%	11%	0%	98
PICKENS	53%	30%	13%	3%	30
RICHLAND	64%	16%	18%	1%	208
SALUDA	50%	29%	21%	0%	14
SPARTANBURG	33%	14%	49%	4%	57
SUMTER	68%	10%	23%	0%	62
UNION	50%	6%	38%	6%	16
WILLIAMSBURG	72%	22%	6%	0%	18
YORK	72%	8%	19%	2%	118
RESTITUTION CENTERS	6%	0%	94%	0%	16
<b>STATE TOTAL</b>	<b>56%</b>	<b>20%</b>	<b>21%</b>	<b>2%</b>	<b>2,088</b>
<b>ACTIVE YOA OFFENDERS</b>	<b>1,174</b>	<b>422</b>	<b>444</b>	<b>21</b>	<b>2,088</b>



# ACTIVE YOA OFFENDERS BY LEVEL OF SUPERVISION

## FIGURE 5



**S.C. DEPARTMENT OF  
PROBATION, PAROLE AND PARDON SERVICES  
YOA CLOSURES BY TYPE  
TABLE 4-D**

COUNTY	SUCCESSFUL	SUCCESSFUL RATE	UNSUCCESSFUL	UNSUCCESSFUL RATE
ABBEVILLE	3	50%	3	50%
AIKEN	17	55%	14	45%
ALLENDALE	0	0%	6	100%
ANDERSON	13	38%	21	62%
BAMBERG	0	0%	1	100%
BARNWELL	5	50%	5	50%
BEAUFORT	13	50%	13	50%
BERKELEY	24	57%	18	43%
CALHOUN	1	11%	8	89%
CHARLESTON	58	32%	122	68%
CHEROKEE	10	48%	11	52%
CHESTER	7	47%	8	53%
CHESTERFIELD	8	38%	13	62%
CLARENDON	8	67%	4	33%
COLLETON	4	36%	7	64%
DARLINGTON	9	39%	14	61%
DILLON	13	62%	8	38%
DORCHESTER	19	53%	17	47%
EDGEFIELD	2	40%	3	60%
FAIRFIELD	4	67%	2	33%
FLORENCE	18	32%	39	68%
GEORGETOWN	7	47%	8	53%
GREENVILLE	35	46%	41	54%
GREENWOOD	20	54%	17	46%
HAMPTON	4	57%	3	43%
HORRY	20	48%	22	52%
JASPER	6	86%	1	14%
KERSHAW	4	31%	9	69%
LANCASTER	8	50%	8	50%
LAURENS	10	42%	14	58%
LEE	0	0%	2	100%
LEXINGTON	14	47%	16	53%
MCCORMICK	1	33%	2	67%
MARION	14	50%	14	50%
MARLBORO	7	41%	10	59%
NEWBERRY	3	21%	11	79%
OCONEE	9	64%	5	36%
ORANGEBURG	18	45%	22	55%
PICKENS	6	33%	12	67%
RICHLAND	35	36%	62	64%
SALUDA	2	25%	6	75%
SPARTANBURG	23	27%	62	73%
SUMTER	24	62%	15	38%
UNION	8	47%	9	53%
WILLIAMSBURG	7	50%	7	50%
YORK	42	56%	33	44%
TRANSITIONAL ADMIN	9	100%	0	0%
<b>STATE TOTAL</b>	<b>572</b>	<b>43%</b>	<b>748</b>	<b>57%</b>

**S.C. DEPARTMENT OF  
PROBATION, PAROLE AND PARDON SERVICES  
YOA ADMISSIONS BY AGE  
TABLE 5-D**

<b>COUNTY</b>	<b>Age 24 &amp; Under</b>	<b>Percent 24 &amp; Under</b>	<b>Age 25 &amp; Over</b>	<b>Percent 25 &amp; Over</b>
ABBEVILLE	4	100%	0	0%
AIKEN	41	93%	3	7%
ALLENDALE	3	43%	4	57%
ANDERSON	28	70%	12	30%
BAMBERG	3	75%	1	25%
BARNWELL	10	91%	1	9%
BEAUFORT	16	94%	1	6%
BERKELEY	37	80%	9	20%
CALHOUN	8	100%	0	0%
CHARLESTON	176	84%	33	16%
CHEROKEE	11	79%	3	21%
CHESTER	14	78%	4	22%
CHESTERFIELD	15	83%	3	17%
CLARENDON	8	100%	0	0%
COLLETON	13	81%	3	19%
DARLINGTON	20	91%	2	9%
DILLON	11	85%	2	15%
DORCHESTER	39	93%	3	7%
EDGEFIELD	8	89%	1	11%
FAIRFIELD	8	80%	2	20%
FLORENCE	48	94%	3	6%
GEORGETOWN	24	89%	3	11%
GREENVILLE	73	87%	11	13%
GREENWOOD	20	80%	5	20%
HAMPTON	9	100%	0	0%
HORRY	35	88%	5	13%
JASPER	7	88%	1	13%
KERSHAW	7	100%	0	0%
LANCASTER	22	79%	6	21%
LAURENS	21	72%	8	28%
LEE	8	89%	1	11%
LEXINGTON	30	88%	4	12%
MCCORMICK	3	100%	0	0%
MARION	21	95%	1	5%
MARLBORO	23	96%	1	4%
NEWBERRY	17	100%	0	0%
OCONEE	11	92%	1	8%
ORANGEBURG	37	77%	11	23%
PICKENS	14	78%	4	22%
RICHLAND	101	89%	12	11%
SALUDA	8	80%	2	20%
SPARTANBURG	63	89%	8	11%
SUMTER	40	91%	4	9%
UNION	10	83%	2	17%
WILLIAMSBURG	10	100%	0	0%
YORK	78	93%	6	7%
TRANSITIONAL ADM.	1	100%	0	0%
<b>STATE TOTAL</b>	<b>1214</b>	<b>87%</b>	<b>186</b>	<b>13%</b>

*Section E*  
*Violations*



## Violations

---

**VIOLATIONS:** Offenders charged by their supervising agents with violations of the conditions of supervision are reviewed through an administrative hearing process to determine if probable cause of a violation exists. If a violation is found, a determination is made as to which community sanctions should be imposed, or whether the case should be referred to the Board or the Court for revocation action.

Table 1-E provides data by county on the violation process. Statewide, a total of 5,722 violation hearings were held. At those hearings, 3,133 cases were continued or recommended for continuation, while 2,589 cases were revoked or recommended for revocation.

Table 2-E provides a comparison of changes in active population and the type of closure for FY 02 to FY 06.

**S.C. DEPARTMENT OF  
PROBATION, PAROLE AND PARDON SERVICES  
VIOLATIONS BY COUNTY  
TABLE 1-E**

<b>COUNTY</b>	<b>CASES HEARD</b>	<b>CASES CONTINUED OR RECOMMENDED FOR CONTINUATION</b>	<b>CASES REVOKED OR RECOMMENDED FOR REVOCATION</b>
ABBEVILLE	4	2	2
AIKEN	155	88	67
ALLENDALE	53	22	31
ANDERSON	350	254	96
BAMBERG	31	21	10
BARNWELL	57	28	29
BEAUFORT	79	26	53
BERKELEY	150	79	71
CALHOUN	101	30	71
CHARLESTON	752	224	528
CHEROKEE	135	92	43
CHESTER	15	6	9
CHESTERFIELD	22	5	17
CLARENDON	44	26	18
COLLETON	66	32	34
DARLINGTON	56	30	26
DILLON	57	34	23
DORCHESTER	147	76	71
EDGEFIELD	22	14	8
FAIRFIELD	15	6	9
FLORENCE	157	92	65
GEORGETOWN	52	16	36
GREENVILLE	873	629	244
GREENWOOD	98	60	38
HAMPTON	34	11	23
HORRY	75	45	30
JASPER	61	32	29
KERSHAW	108	64	44
LANCASTER	68	27	41
LAURENS	79	27	52
LEE	15	8	7
LEXINGTON	223	151	72
MCCORMICK	51	30	21
MARION	37	12	25
MARLBORO	24	10	14
NEWBERRY	96	50	46
OCONEE	110	76	34
ORANGEBURG	245	138	107
PICKENS	73	53	20
RICHLAND	337	181	156
SALUDA	48	22	26
SPARTANBURG	197	94	103
SUMTER	90	62	28
UNION	50	26	24
WILLIAMSBURG	61	46	15
YORK	149	76	73
<b>STATE TOTAL</b>	<b>5,722</b>	<b>3,133</b>	<b>2,589</b>

**SC DEPARTMENT OF  
PROBATION, PAROLE AND PARDON SERVICES  
CLOSING BY TYPE  
TABLE 2-E**

FY 05-06								
	Active							Total
	Population	Successful	Exp-I <sup>1</sup>	JC-I <sup>2</sup>	Rev-C <sup>3</sup>	Rev-T <sup>4</sup>	Rev-TC <sup>5</sup>	Unsuccessful
Probation	26,462	9,539	42	35	556	4,494	124	5,251
Parole	2,578	871	6	0	25	237	14	282
YOA	2,088	572	5	0	74	613	56	748
Other Releases	1,308	419	15	0	0	7	0	22
<b>Total</b>	<b>32,436</b>	<b>11,401</b>	<b>68</b>	<b>35</b>	<b>655</b>	<b>5,351</b>	<b>194</b>	<b>6,303</b>
<b>% Unsuccessful</b>			1.1%	0.6%	10.4%	84.9%	3.1%	

FY 04-05								
	Active							Total
	Population	Successful	Exp-I <sup>1</sup>	JC-I <sup>2</sup>	Rev-C <sup>3</sup>	Rev-T <sup>4</sup>	Rev-TC <sup>5</sup>	Unsuccessful
Probation	26,955	9,522	21	24	513	4,399	99	5,056
Parole	2,848	907	8	0	29	235	13	285
YOA	2,191	662	11	0	72	597	40	720
Other Releases	1,047	422	10	0	0	17	0	27
<b>Total</b>	<b>33,041</b>	<b>11,513</b>	<b>50</b>	<b>24</b>	<b>614</b>	<b>5,248</b>	<b>152</b>	<b>6,088</b>
<b>% Unsuccessful</b>			0.8%	0.4%	10.1%	86.2%	2.5%	

FY 03-04								
	Active							Total
	Population	Successful	Exp-I <sup>1</sup>	JC-I <sup>2</sup>	Rev-C <sup>3</sup>	Rev-T <sup>4</sup>	Rev-TC <sup>5</sup>	Unsuccessful
Probation	27,172	10,835	19	21	504	4,786	89	5,419
Parole	2,840	943	14	0	27	306	7	354
YOA	2,314	499	4	0	85	648	36	773
Other Releases	779	351	5	0	0	21	0	26
<b>Total</b>	<b>33,105</b>	<b>12,628</b>	<b>42</b>	<b>21</b>	<b>616</b>	<b>5,761</b>	<b>132</b>	<b>6,572</b>
<b>% Unsuccessful</b>			0.6%	0.3%	9.4%	87.7%	2.0%	

FY 02-03								
	Active							Total
	Population	Successful	Exp-I <sup>1</sup>	JC-I <sup>2</sup>	Rev-C <sup>3</sup>	Rev-T <sup>4</sup>	Rev-TC <sup>5</sup>	Unsuccessful
Probation	28,090	11,320	18	34	553	4,650	82	5,337
Parole	2,898	984	13	0	50	322	9	394
YOA	2,104	554	5	0	106	642	62	815
Other Releases	617	328	4	0	0	36	0	40
<b>Total</b>	<b>33,709</b>	<b>13,190</b>	<b>40</b>	<b>34</b>	<b>709</b>	<b>5,650</b>	<b>153</b>	<b>6,586</b>
<b>% Unsuccessful</b>			0.6%	0.5%	10.8%	85.8%	2.3%	

FY 01-02								
	Active							Total
	Population	Successful	Exp-I <sup>1</sup>	JC-I <sup>2</sup>	Rev-C <sup>3</sup>	Rev-T <sup>4</sup>	Rev-TC <sup>5</sup>	Unsuccessful
Probation	28,215	11,399	8	54	466	4,211	92	4,831
Parole	3,279	1,000	6	0	38	345	17	406
YOA	2,180	600	5	0	95	611	49	760
Other Releases	450	391	1	0	1	31	0	33
<b>Total</b>	<b>34,124</b>	<b>13,390</b>	<b>20</b>	<b>54</b>	<b>600</b>	<b>5,198</b>	<b>158</b>	<b>6,030</b>
<b>% Unsuccessful</b>			0.3%	0.9%	10.0%	86.2%	2.6%	

**Footnotes:**

- <sup>1</sup> Exp-I - Expired Offender in Institution
- <sup>2</sup> JC-I - Judicial Closure in Institution
- <sup>3</sup> Rev-C - Revoke, New Conviction
- <sup>4</sup> Rev-T - Revoke, Technical Charges
- <sup>5</sup> Rev TC - Revoke, Technical Charges & New Charges Pending

# *Summary*





## Summary

---

Chart 1 summarizes the population characteristics of SCDPPPS offenders by supervision programs, Probation, Parole and YOA as well as offender involvement in drug testing.

The proportion of violent offenses among YOA admissions and probationers during FY 05-06 was the same at 3%, with the percentage of violent offenses for parole admissions at 33%, higher than for any other offender category.

Overall, the most utilized level of supervision was standard (70%), followed by high (22%), intensive (4%) and sex offender (3%) for all cases.

The overall success rate for closures was 64% during the fiscal year. The overall success rate for parolees was 81%. Both probationers (64%) and YOA offenders (43%), had less successful closures rates than parolees.

Of the 18,352 offenders that were tested for drug use while under supervision, 7,422, or 40.4%, tested positive for drugs.

Chart 2 compares the number of admissions for each fiscal year from 1987 to 2006. Admissions decreased for FY 05-06 by 1.6% from the previous fiscal year, the lowest decrease in admissions since FY 94.

Chart 3 displays violent admissions by program for fiscal year 1993 to 2006. Due to the small number of early release offenders for FY 05-06 they were included in parole. YOA offenders showed a slight increase in violent admissions over the previous fiscal year while the percentage of Parole violent admissions continues to increase.

**S.C. DEPARTMENT OF  
PROBATION, PAROLE AND PARDON SERVICES  
POPULATION CHARACTERISTICS  
CHART 1**

**ADMISSIONS**

<u>CATEGORY:</u>	Probation		Parole		YOA		Total	
	FY 05	FY 06	FY 05	FY 06	FY 05	FY 06	FY 05	FY 06
<b><u>RACE:</u></b>								
BLACK	52%	50%	66%	66%	70%	71%	55%	53%
WHITE	46%	48%	32%	33%	29%	29%	43%	45%
OTHER	2%	2%	2%	1%	< 1%	1%	2%	2%
<b><u>GENDER:</u></b>								
MALE	79%	78%	89%	89%	97%	96%	82%	81%
FEMALE	21%	22%	11%	11%	3%	4%	18%	19%
<b><u>OFFENSE TYPE:</u></b>								
VIOLENT	3%	3%	27%	33%	2%	3%	6%	6%
NON-VIOLENT	97%	97%	73%	67%	98%	97%	94%	94%

**ACTIVES**

<u>LEVEL OF SUPERVISION:</u>	FY 05	FY 06	FY 05	FY 06	FY 05	FY 06	FY 05	FY 06
ADMINISTRATIVE	71%	72%	66%	67%	56%	56%	70%	70%
HIGH RISK	27%	23%	22%	15%	23%	20%	26%	22%
INTENSIVE	2%	2%	12%	12%	21%	21%	4%	4%
SEX OFFENDER	**	3%	**	6%	**	2%	**	3%

\*\* New Supervision Level

**CLOSURES**

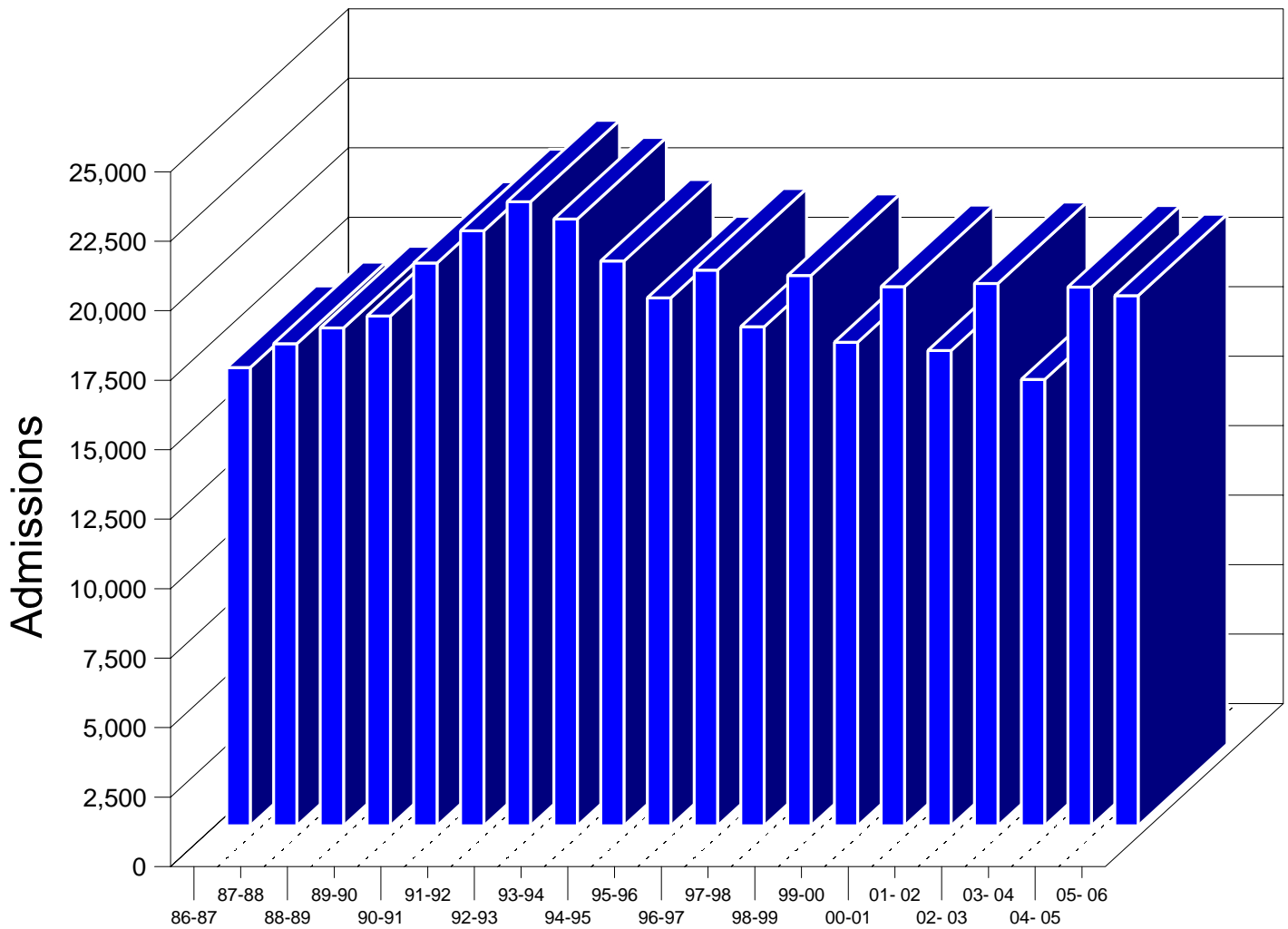
<u>CASE OUTCOME:</u>	FY 05	FY 06	FY 05	FY 06	FY 05	FY 06	FY 05	FY 06
SUCCESSFUL	65%	64%	81%	81%	48%	43%	65%	64%
UNSUCCESSFUL	35%	36%	19%	19%	52%	57%	35%	36%

**DRUG TESTING**

	<u>FY 05</u>	<u>FY 06</u>
INDIVIDUAL OFFENDERS TESTED	14,286	18,352
INDIVIDUALS TESTING POSITIVE	5,818	7,422
% OF INDIVIDUAL OFFENDERS TESTING POSITIVE	40.73%	40.44%
TOTAL POSITIVE TESTS	9,428	12,756
NUMBER OF TIMES OFFENDERS TESTED	20,692	28,804

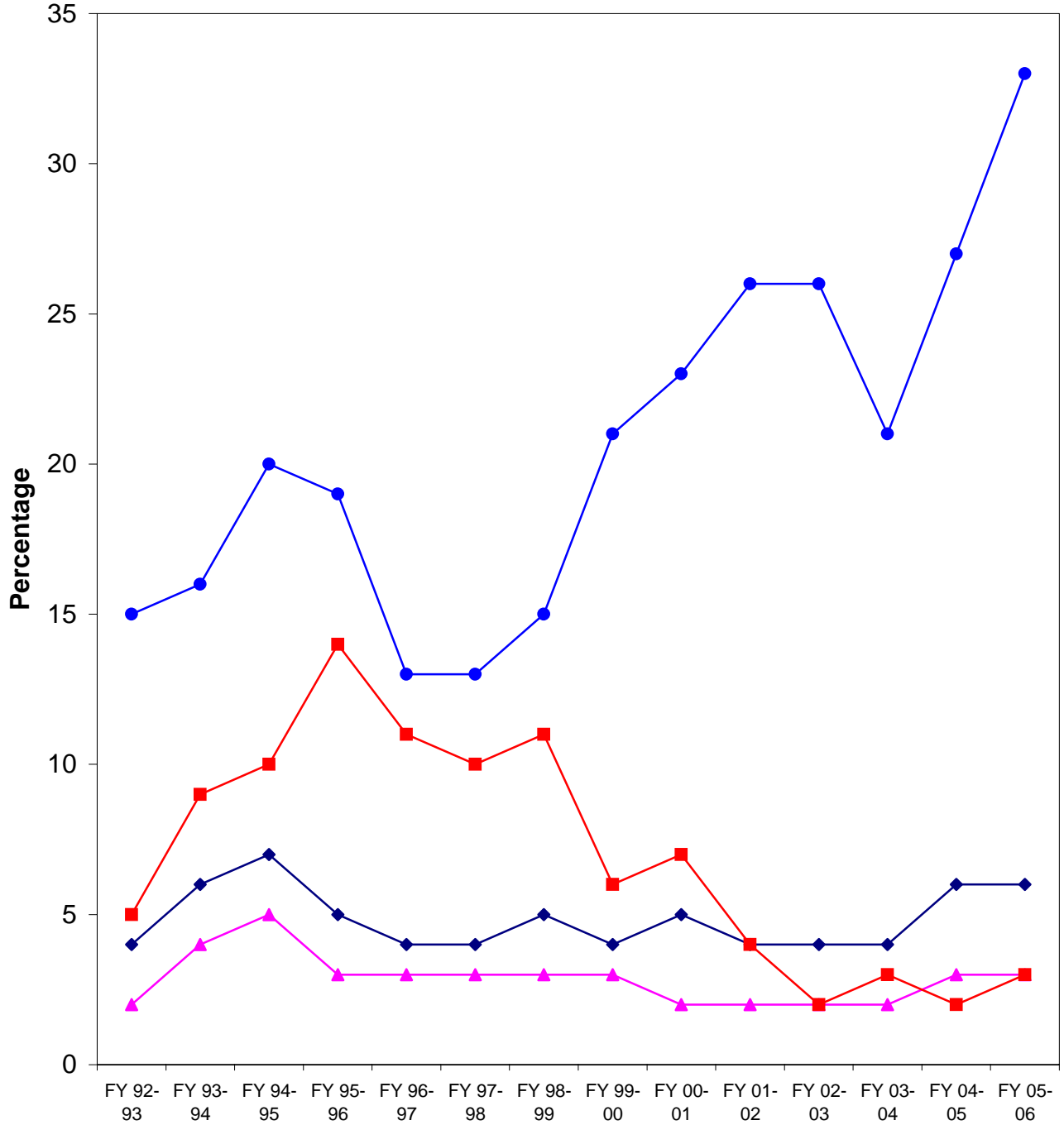
# ADMISSIONS COMPARING 1987 - 2006

## CHART 2



# VIOLENT ADMISSIONS BY PROGRAM AND FISCAL YEAR

## Chart 3



◆ ALL ADMISSIONS   
 ▲ PROBATION   
 ● PAROLE   
 ■ YOA

Early Release included in Parole for FY 96-98, FY99-00 & FY00 thru 06

**S.C. DEPARTMENT OF PROBATION, PAROLE AND PARDON SERVICES**

***Samuel B. Glover, Director***

**Office of Executive Programs**

***Tony Dukes - Research Director***  
***Marchar P. Stagg - Statistical & Research Analyst***  
***Emily Nance - Project Coordinator***  
***Crystal Knoll - Research Assistant***